

TLAXCALA

## ---RED FEDERAL LIBRE---

1 Amozoc - Teziutlán	MEX-129
2 Apizaco - Tejocotal	MEX-119
3 Huamantla - La Venta	MEX-136
4 Huamantla - Terrenate	MEX-136
5 Libramiento de Apizaco	MEX-136
6 Libramiento de Santiago Tlalpan	MEX-136
7 Libramiento Huamantla	MEX-136
8 Libramiento Hueyotlipan	MEX-136
9 Los Reyes - Zacatepec	MEX-136
10 Los Tréboles - Tlaxcala	MEX-117
11 Puebla - Belem	MEX-121
12 Puebla - Tlaxcala	MEX-119
13 Ramal a San Felipe de Hidalgo	MEX-136
14 San Martín Texmelucan - Tlaxcala	MEX-117
15 San Pablo Apetatitlán - Apizaco	MEX-119
16 T. C. (Puebla - Tlaxcala) - Villa Alta	MEX-119
17 Tetlatlahuca - Santa Ana Chiautempan	MEX-119
18 Tlaxcala - Belem	MEX-119

## ---RED FEDERAL DE CUOTA---

19 Amozoc - Perote (Cuota)	MEX-140D
20 Libramiento de Tlaxcala (Cuota)	MEX-117D
21 Libramiento Norte de la Ciudad de México (Cuota)	MEX-055D
22 México - Puebla (Cuota)	MEX-150D
23 San Martín Texmelucan - Tlaxcala - El Molinito (Cuota)	MEX-117D

## ---RED ESTATAL LIBRE---

24 Ramal a Alzayanca de Hidalgo	TLAX
25 Ramal a San Pedro Ecatepec	TLAX
26 Ramal a Xalostoc	TLAX
27 Xalostoc - Terrenate	TLAX

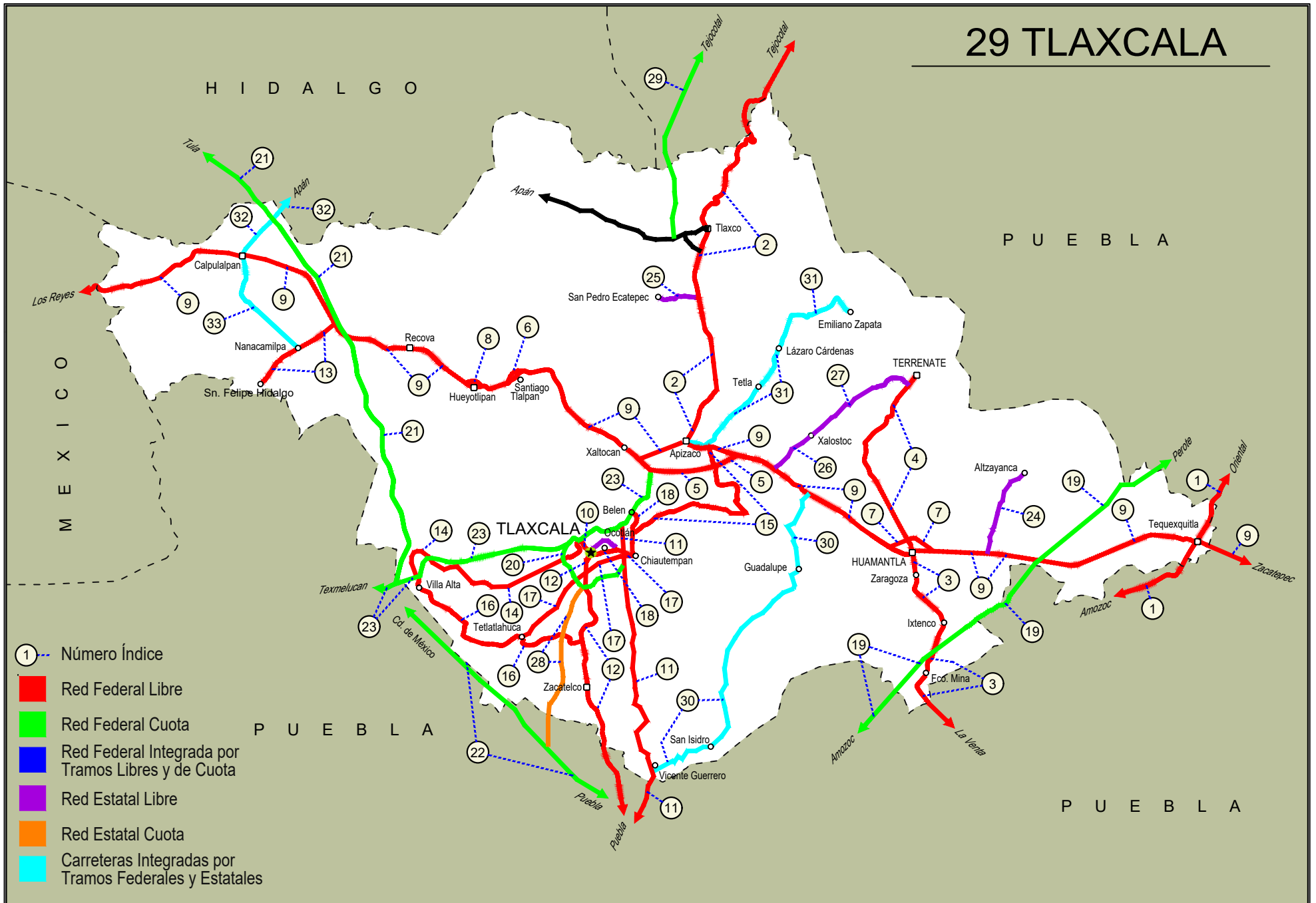
## ---RED ESTATAL DE CUOTA---

28 Puebla - Tlaxcala (Cuota)	PUE-D
29 Tlaxco - Tejocotal (Cuota)	PUE-TLAX-HGO-D

## ---CARRETERAS INTEGRADAS POR TRAMOS FEDERALES Y ESTATALES---

30 Acocotla - Vicente Guerrero	MEX-TLAX
31 Apizaco - Emiliano Zapata	TLAX-MEX-136
32 Calpulalpan - El Ocote	MEX-HGO
33 Calpulalpan - Nanacamilpa	TLAX-MEX-136

# 29 TLAXCALA



- ① --- Número Índice
- Red Federal Libre
- Red Federal Cuota
- Red Federal Integrada por Tramos Libres y de Cuota
- Red Estatal Libre
- Red Estatal Cuota
- Carreteras Integradas por Tramos Federales y Estatales



TLAXCALA

1 CARR: Amozoc - Teziutlán

CLAVE: 00210

RUTA: MEX-129

AÑO: 2025

LUGAR	ESTACION				CLASIFICACION VEHICULAR EN PORCIENTO										COORDENADAS					
	KM	TE	SC	TDPA	M	A	B	C2	C3	T3S2	T3S3	T3S2R4	OTROS	A	B	C	K'	D	LATITUD	LONGITUD
Amozoc	0.00																			
X. C. Puebla - Acatzingo (Cuota)	1.40	3	0	12165	3.4	79.9	1.5	7.8	2.4	2.1	2.1	0.4	0.4	83.3	1.5	15.2	0.086	0.544	19.051147	-98.027880
Acajete	12.00	3	1	5830	2.3	79.3	1.2	8.8	1.8	4.7	0.9	0.6	0.4	81.6	1.2	17.2	0.066	0.554	19.120060	-97.941222
Acajete	12.00	3	2	5462	2.5	78.3	1.1	9.0	2.0	5.1	1.0	0.5	0.5	80.8	1.1	18.1	0.079	0.554	19.120102	-97.941291
Rafael Lara Grajales	35.50	1	0	5271	4.9	80.2	2.1	3.4	2.8	3.3	1.6	1.3	0.4	85.1	2.1	12.8	0.083	0.707	19.236317	-97.807570
Rafael Lara Grajales	35.50	3	0	11580	2.1	82.3	2.1	5.1	2.5	3.8	1.4	0.4	0.3	84.4	2.1	13.5	0.078	0.560	19.231568	-97.785622
Lim. Edos. Term. Pue. Ppia. Tlax.	50.54																			
X. C. Los Reyes - Zacatepec	56.31	1	0	5236	2.4	79.9	3.2	7.1	2.3	2.7	1.6	0.7	0.1	82.3	3.2	14.5	0.083	0.569	19.315647	-97.654627
Lim. Edos. Term. Tlax. Ppia. Pue.	60.22																			
Oriental	62.62	1	0	6854	5.6	82.5	2.1	4.8	1.5	2.4	0.6	0.4	0.1	88.1	2.1	9.8	0.087	0.555	19.365588	-97.628773
Oriental	62.62	3	0	8778	4.2	82.2	1.9	5.6	1.2	3.3	0.8	0.5	0.3	86.4	1.9	11.7	0.088	0.532	19.382889	-97.619053
X. C. Amozoc - Perote (Cuota)	69.00	1	1	4896	7.5	83.4	1.7	3.4	1.5	1.2	0.8	0.4	0.1	90.9	1.7	7.4	0.094	0.507	19.411425	-97.635579
X. C. Amozoc - Perote (Cuota)	69.00	1	2	5469	7.3	84.1	1.4	3.6	1.6	0.9	0.6	0.4	0.1	91.4	1.4	7.2	0.094	0.507	19.411230	-97.635602
X. C. Amozoc - Perote (Cuota)	69.00	3	0	11146	3.8	80.1	2.2	6.8	1.6	3.6	1.0	0.4	0.5	83.9	2.2	13.9	0.077	0.611	19.424330	-97.649068
Libres	76.35	3	0	10924	2.6	81.2	1.9	6.9	1.4	3.6	1.1	0.5	0.8	83.8	1.9	14.3	0.082	0.538	19.482156	-97.673884
San Miguel Tenextatiloyán	106.70	1	0	4911	4.7	84.9	3.1	2.8	1.2	1.7	0.7	0.8	0.1	89.6	3.1	7.3	0.090	0.691	19.702103	-97.598828
T. Izq. Zacapoaxtla	114.80	1	0	7869	4.3	83.1	1.6	4.0	1.0	3.9	0.9	0.7	0.5	87.4	1.6	11.0	0.085	0.537	19.759159	-97.568389
T. Izq. Zacapoaxtla	114.80	3	0	11150	3.2	82.9	1.5	5.2	1.0	4.4	0.6	0.6	0.6	86.1	1.5	12.4	0.087	0.512	19.764562	-97.564981
Zaragoza	116.80	3	0	7802	3.5	84.0	1.8	5.1	0.8	3.2	0.9	0.2	0.5	87.5	1.8	10.7	0.083	0.508	19.788225	-97.540873
Teziutlán	157.80	1	0	14114	4.4	76.5	0.7	15.4	0.8	1.6	0.1	0.4	0.1	80.9	0.7	18.4	0.084	0.530	19.817549	-97.379551

2 CARR: Apizaco - Tejocotal

CLAVE: 00430

RUTA: MEX-119

AÑO: 2025

LUGAR	ESTACION				CLASIFICACION VEHICULAR EN PORCIENTO										COORDENADAS					
	KM	TE	SC	TDPA	M	A	B	C2	C3	T3S2	T3S3	T3S2R4	OTROS	A	B	C	K'	D	LATITUD	LONGITUD
Apizaco	0.00	3	1	12649	4.3	85.6	1.5	4.3	1.2	2.0	0.4	0.6	0.1	89.9	1.5	8.6	0.087	0.547	19.437518	-98.131326
Apizaco	0.00	3	2	12557	4.2	85.4	1.7	4.2	1.2	2.0	0.6	0.6	0.1	89.6	1.7	8.7	0.086	0.547	19.437540	-98.131383
T. Der. Tetla	6.60	3	0	24135	0.7	85.9	1.7	5.2	1.7	2.4	1.5	0.5	0.4	86.6	1.7	11.7	0.074	0.546	19.471654	-98.112275
T. Izq. Atlangatepec	12.15	1	0	18216	1.7	84.1	2.1	4.9	1.9	2.5	1.6	0.8	0.4	85.8	2.1	12.1	0.075	0.542	19.505704	-98.116995
Tlaxco	23.91	1	1	5809	4.4	87.1	1.1	3.7	0.9	1.9	0.5	0.3	0.1	91.5	1.1	7.4	0.082	0.515	19.598468	-98.125531
Tlaxco	23.91	1	2	5953	4.5	86.5	1.2	3.7	1.0	1.9	0.7	0.4	0.1	91.0	1.2	7.8	0.081	0.515	19.598495	-98.125636
Tlaxco	23.91	3	0	6553	3.4	85.6	1.2	4.0	1.8	2.4	0.8	0.5	0.3	89.0	1.2	9.8	0.091	0.579	19.626322	-98.124798
Lim. Edos. Term. Tlax. Ppia. Pue.	34.45																			
T. Der. Tetela de Ocampo	52.20	1	0	9875	6.9	82.8	1.1	5.7	1.2	0.9	1.1	0.2	0.1	89.7	1.1	9.2	0.085	0.630	19.800530	-98.026733
Zacatlán	71.25	1	0	15392	7.2	84.9	1.3	3.7	1.2	0.9	0.3	0.4	0.1	92.1	1.3	6.6	0.082	0.551	19.918424	-97.959183

TLAXCALA

2 CARR: Apizaco - Tejocotal

CLAVE: 00430

RUTA: MEX-119

AÑO: 2025

LUGAR	ESTACION				CLASIFICACION VEHICULAR EN PORCIENTO													COORDENADAS			
	KM	TE	SC	TDPA	M	A	B	C2	C3	T3S2	T3S3	T3S2R4	OTROS	A	B	C	K'	D	LATITUD	LONGITUD	
Lim. Edos. Term. Pue. Ppia. Hgo.	110.45																				
T. C. Pachuca - Tuxpam	113.15	1	0	10702	4.0	77.2	2.3	8.0	2.9	1.5	0.9	2.6	0.6	81.2	2.3	16.5	0.074	0.504	20.123908	-98.128603	

3 CARR: Huamantla - La Venta

CLAVE: 29564

RUTA: MEX-136

AÑO: 2025

LUGAR	ESTACION				CLASIFICACION VEHICULAR EN PORCIENTO													COORDENADAS		
	KM	TE	SC	TDPA	M	A	B	C2	C3	T3S2	T3S3	T3S2R4	OTROS	A	B	C	K'	D	LATITUD	LONGITUD
Huamantla	0.00	3	1	5373	5.7	85.8	1.0	4.9	1.0	0.6	0.5	0.4	0.1	91.5	1.0	7.5	0.081	0.520	19.297916	-97.920954
Huamantla	0.00	3	2	5474	5.7	85.5	0.9	5.4	0.8	0.8	0.4	0.4	0.1	91.2	0.9	7.9	0.080	0.520	19.297924	-97.920846
Ignacio Zaragoza	2.30	3	0	6538	3.4	85.8	1.4	5.7	0.6	2.2	0.7	0.2	0.0	89.2	1.4	9.4	0.087	0.584	19.282161	-97.921673
Ixtenco	8.00	1	0	6752	3.3	86.4	1.2	5.8	0.4	2.4	0.3	0.1	0.1	89.7	1.2	9.1	0.073	0.511	19.261514	-97.900208
Ixtenco	8.00	3	0	4620	4.3	85.9	2.2	6.3	0.7	0.3	0.2	0.1	0.0	90.2	2.2	7.6	0.082	0.586	19.242181	-97.896579
X. C. Amozoc - Perote (Cuota)	11.40	1	0	4791	4.8	85.3	2.1	6.3	0.9	0.4	0.1	0.1	0.0	90.1	2.1	7.8	0.081	0.590	19.227600	-97.902214
Zitlaltepec	13.60	1	0	4362	4.9	85.1	1.6	5.7	0.8	1.2	0.5	0.2	0.0	90.0	1.6	8.4	0.082	0.597	19.215784	-97.907713
Zitlaltepec	13.60	3	0	4051	4.9	84.8	1.4	7.1	0.4	0.9	0.3	0.2	0.0	89.7	1.4	8.9	0.077	0.584	19.193504	-97.919025
T. C. Amozoc - Teziutlán	17.60	1	0	3293	5.7	81.6	2.0	5.6	1.7	2.6	0.4	0.3	0.1	87.3	2.0	10.7	0.089	0.672	19.176731	-97.909464

4 CARR: Huamantla - Terrenate

CLAVE: 29036

RUTA: MEX-136

AÑO: 2025

LUGAR	ESTACION				CLASIFICACION VEHICULAR EN PORCIENTO													COORDENADAS		
	KM	TE	SC	TDPA	M	A	B	C2	C3	T3S2	T3S3	T3S2R4	OTROS	A	B	C	K'	D	LATITUD	LONGITUD
Huamantla	0.00	3	0	5902	4.8	80.7	1.9	4.7	2.1	3.6	1.0	1.0	0.2	85.5	1.9	12.6	0.082	0.581	19.336925	-97.934594
T. Izq. Xicoténcatl	12.50	1	0	1218	5.3	88.4	0.3	4.8	0.9	0.2	0.1	0.0	0.0	93.7	0.3	6.0	0.090	0.518	19.413340	-97.968780
Terrenate	21.00	1	0	1652	10.1	85.5	0.6	2.6	0.8	0.1	0.2	0.1	0.0	95.6	0.6	3.8	0.107	0.534	19.463891	-97.929939

5 CARR: Libramiento de Apizaco

CLAVE: 29567

RUTA: MEX-136

AÑO: 2025

LUGAR	ESTACION				CLASIFICACION VEHICULAR EN PORCIENTO													COORDENADAS			
	KM	TE	SC	TDPA	M	A	B	C2	C3	T3S2	T3S3	T3S2R4	OTROS	A	B	C	K'	D	LATITUD	LONGITUD	
T. C. Los Reyes - Zacatepec	0.00																				
T. C. Los Reyes - Zacatepec	0.00	3	1	21767	2.3	83.0	3.0	2.6	1.4	4.8	1.2	1.3	0.4	85.3	3.0	11.7	0.073	0.548	19.389852	-98.168268	
T. C. Los Reyes - Zacatepec	0.00	3	2	23981	2.4	83.7	2.8	2.3	1.5	4.2	1.4	1.3	0.4	86.1	2.8	11.1	0.077	0.548	19.389924	-98.168139	
T. Der. Amaxac de Guerrero	6.00	1	1	18784	4.8	76.9	3.2	3.8	2.2	5.3	1.8	1.6	0.4	81.7	3.2	15.1	0.082	0.542	19.377556	-98.142860	
T. Der. Amaxac de Guerrero	6.00	1	2	19686	4.9	77.8	2.9	4.0	2.0	5.1	1.7	1.3	0.3	82.7	2.9	14.4	0.069	0.542	19.379284	-98.160896	
T. Der. Amaxac de Guerrero	6.00	3	1	14031	2.1	76.9	3.9	2.7	2.2	7.2	2.0	2.4	0.6	79.0	3.9	17.1	0.095	0.526	19.399934	-98.101627	

TLAXCALA

5 CARR : Libramiento de Apizaco

CLAVE: 29567

RUTA: MEX-136

AÑO: 2025

LUGAR	ESTACION				CLASIFICACION VEHICULAR EN PORCIENTO													COORDENADAS		
	KM	TE	SC	TDPA	M	A	B	C2	C3	T3S2	T3S3	T3S2R4	OTROS	A	B	C	K'	D	LATITUD	LONGITUD
T. Der. Amaxac de Guerrero	6.00	3	2	14462	2.3	77.2	3.5	2.8	2.1	7.0	2.0	2.5	0.6	79.5	3.5	17.0	0.083	0.526	19.399986	-98.101705
T. C. Los Reyes - Zacatepec	10.40																			

6 CARR : Libramiento de Santiago Tlalpan

CLAVE:

RUTA: MEX-136

AÑO: 2025

LUGAR	ESTACION				CLASIFICACION VEHICULAR EN PORCIENTO													COORDENADAS		
	KM	TE	SC	TDPA	M	A	B	C2	C3	T3S2	T3S3	T3S2R4	OTROS	A	B	C	K'	D	LATITUD	LONGITUD
T. C. Los Reyes - Zacatepec Oeste	0.00	3	1	9614	1.8	70.3	4.2	6.7	2.4	9.2	2.4	2.4	0.6	72.1	4.2	23.7	0.083	0.626	19.476125	-98.314080
T. C. Los Reyes - Zacatepec Oeste	0.00	3	2	10689	1.8	70.4	4.1	6.6	2.5	9.1	2.4	2.5	0.6	72.2	4.1	23.7	0.118	0.626	19.475659	-98.314455
T. C. Los Reyes - Zacatepec Este	3.00																			

7 CARR : Libramiento Huamantla

CLAVE: 29567

RUTA: MEX-136

AÑO: 2025

LUGAR	ESTACION				CLASIFICACION VEHICULAR EN PORCIENTO													COORDENADAS		
	KM	TE	SC	TDPA	M	A	B	C2	C3	T3S2	T3S3	T3S2R4	OTROS	A	B	C	K'	D	LATITUD	LONGITUD
T. C. Los Reyes - Zacatepec (Poniente)	0.00	3	1	11766	3.4	72.6	4.2	3.9	2.5	8.2	2.1	2.4	0.7	76.0	4.2	19.8	0.091	0.571	19.325310	-97.931041
T. C. Los Reyes - Zacatepec (Poniente)	0.00	3	2	12110	4.4	71.5	4.0	3.8	2.9	7.8	2.5	2.4	0.7	75.9	4.0	20.1	0.085	0.571	19.325365	-97.931107
T. C. Los Reyes - Zacatepec (Oriente)	4.60	1	1	12378	5.2	67.7	3.6	4.9	3.5	8.3	3.8	2.3	0.7	72.9	3.6	23.5	0.098	0.510	19.322582	-97.914246
T. C. Los Reyes - Zacatepec (Oriente)	4.60	1	2	11768	5.6	67.5	3.5	5.0	3.4	8.2	3.9	2.2	0.7	73.1	3.5	23.4	0.080	0.510	19.322649	-97.914191

8 CARR : Libramiento Hueyotlipan

CLAVE: 29567

RUTA: MEX-136

AÑO: 2025

LUGAR	ESTACION				CLASIFICACION VEHICULAR EN PORCIENTO													COORDENADAS		
	KM	TE	SC	TDPA	M	A	B	C2	C3	T3S2	T3S3	T3S2R4	OTROS	A	B	C	K'	D	LATITUD	LONGITUD
T. C. Los Reyes - Zacatepec (Poniente)	0.00	3	1	11837	1.0	73.4	4.7	4.4	3.3	7.5	1.9	3.2	0.6	74.4	4.7	20.9	0.070	0.555	19.476173	-98.353178
T. C. Los Reyes - Zacatepec (Poniente)	0.00	3	2	11402	1.0	72.6	5.0	4.5	3.5	7.7	2.0	3.1	0.6	73.6	5.0	21.4	0.079	0.555	19.476187	-98.353948
T. C. Los Reyes - Zacatepec (Oriente)	2.70	1	1	11165	2.5	66.8	4.0	4.3	3.6	11.5	3.0	3.6	0.7	69.3	4.0	26.7	0.083	0.597	19.474277	-98.341269
T. C. Los Reyes - Zacatepec (Oriente)	2.70	1	2	10777	2.5	66.6	3.7	4.4	3.9	11.3	3.1	3.8	0.7	69.1	3.7	27.2	0.066	0.597	19.475221	-98.342896

9 CARR : Los Reyes - Zacatepec

CLAVE: 00052

RUTA: MEX-136

AÑO: 2025

LUGAR	ESTACION				CLASIFICACION VEHICULAR EN PORCIENTO													COORDENADAS		
	KM	TE	SC	TDPA	M	A	B	C2	C3	T3S2	T3S3	T3S2R4	OTROS	A	B	C	K'	D	LATITUD	LONGITUD
T. C. México - Puebla (Libre)	0.00																			
T. Izq. La Magdalena	3.35	3	1	51091	7.2	79.9	1.0	7.8	1.3	1.1	1.2	0.2	0.3	87.1	1.0	11.9	0.051	0.507	19.379969	-98.941146

TLAXCALA

9 CARR: Los Reyes - Zacatepec

CLAVE: 00052

RUTA: MEX-136

AÑO: 2025

LUGAR	ESTACION				CLASIFICACION VEHICULAR EN PORCIENTO										COORDENADAS					
	KM	TE	SC	TDPA	M	A	B	C2	C3	T3S2	T3S3	T3S2R4	OTROS	A	B	C	K'	D	LATITUD	LONGITUD
T. Izq. La Magdalena	3.35	3	2	52725	6.9	80.4	0.9	7.6	1.3	1.4	1.0	0.2	0.3	87.3	0.9	11.8	0.051	0.507	19.380234	-98.941193
T. Izq. Chimalhuacán	8.45	1	1	44493	8.4	81.3	0.5	4.5	1.3	1.5	1.9	0.2	0.4	89.7	0.5	9.8	0.062	0.505	19.413141	-98.920060
T. Izq. Chimalhuacán	8.45	1	2	45372	8.3	81.8	0.6	4.6	1.1	1.4	1.6	0.2	0.4	90.1	0.6	9.3	0.067	0.505	19.413197	-98.920263
T. C. San Bernardino - Tepexpan	17.00	1	1	40215	8.6	82.2	1.0	3.6	1.4	1.6	0.9	0.4	0.3	90.8	1.0	8.2	0.075	0.505	19.469924	-98.893466
T. C. San Bernardino - Tepexpan	17.00	1	2	41167	8.5	82.8	0.8	3.4	1.3	1.7	1.0	0.3	0.2	91.3	0.8	7.9	0.085	0.505	19.469973	-98.893606
T. C. San Bernardino - Tepexpan	17.00	3	1	15579	4.0	87.6	0.5	6.7	0.6	0.3	0.3	0.0	0.0	91.6	0.5	7.9	0.072	0.509	19.483845	-98.886447
T. C. San Bernardino - Tepexpan	17.00	3	2	15041	4.3	87.1	0.4	7.0	0.7	0.3	0.2	0.0	0.0	91.4	0.4	8.2	0.069	0.509	19.483950	-98.886577
Texcoco	23.02	3	1	20104	2.9	78.6	1.9	9.7	2.3	3.2	0.7	0.5	0.2	81.5	1.9	16.6	0.073	0.508	19.527108	-98.858077
Texcoco	23.02	3	2	20730	3.0	78.0	2.1	9.5	2.5	3.3	0.8	0.6	0.2	81.0	2.1	16.9	0.069	0.508	19.527193	-98.858130
T. Izq. Tepetlaoxtoc	30.03	1	1	19025	2.6	77.6	2.3	8.0	2.4	4.4	2.0	0.5	0.2	80.2	2.3	17.5	0.077	0.517	19.545811	-98.826122
T. Izq. Tepetlaoxtoc	30.03	1	2	17768	2.5	77.1	2.5	8.2	2.5	4.5	1.9	0.6	0.2	79.6	2.5	17.9	0.082	0.517	19.545898	-98.826167
T. Der. San Jerónimo Amanalco	31.42	3	1	9292	4.0	75.4	3.5	4.4	2.4	7.6	1.6	0.9	0.2	79.4	3.5	17.1	0.074	0.504	19.550506	-98.793808
T. Der. San Jerónimo Amanalco	31.42	3	2	9156	3.9	75.6	3.4	4.3	2.5	7.5	1.5	0.9	0.4	79.5	3.4	17.1	0.077	0.504	19.551446	-98.795675
T. Der. Totolapan	42.00	3	1	7719	3.5	74.8	2.7	5.0	2.6	7.8	2.3	1.0	0.3	78.3	2.7	19.0	0.096	0.514	19.558124	-98.726600
T. Der. Totolapan	42.00	3	2	8165	3.7	74.3	2.8	4.8	2.7	7.7	2.5	1.2	0.3	78.0	2.8	19.2	0.104	0.514	19.558254	-98.726555
Lim. Edos. Term. Méx. Ppia. Tlax.	43.15																			
T. C. Calpulalpan - El Ocote	58.15																			
Calpulalpan	59.58	1	1	10999	3.6	80.6	3.6	2.9	1.8	5.4	1.1	0.8	0.2	84.2	3.6	12.2	0.078	0.662	19.593036	-98.583858
Calpulalpan	59.58	1	2	9843	3.9	80.9	3.4	2.9	1.8	5.2	0.9	0.8	0.2	84.8	3.4	11.8	0.104	0.662	19.593137	-98.584207
Calpulalpan	59.58	3	0	23095	1.7	75.8	5.0	6.3	2.5	6.2	1.2	1.0	0.3	77.5	5.0	17.5	0.069	0.619	19.577128	-98.519158
T. Der. Nanacamilpa	71.76	3	0	19197	1.7	77.5	4.5	4.3	2.3	6.6	1.3	1.5	0.3	79.2	4.5	16.3	0.062	0.600	19.523813	-98.478544
X. C. Arco Norte de La Ciudad de México	73.80	3	1	11004	2.0	73.7	3.8	3.6	2.0	9.1	2.8	2.5	0.5	75.7	3.8	20.5	0.090	0.679	19.513526	-98.453998
X. C. Arco Norte de La Ciudad de México	73.80	3	2	11422	2.0	74.2	4.0	3.4	1.9	8.9	2.7	2.3	0.6	76.2	4.0	19.8	0.107	0.679	19.513610	-98.453990
T. Libramiento Hueyotlipan Oeste	86.84																			
Hueyotlipan	88.21	1	1	11530	2.1	75.7	3.7	2.8	1.9	9.2	1.7	2.2	0.7	77.8	3.7	18.5	0.078	0.582	19.480868	-98.366840
Hueyotlipan	88.21	1	2	11061	2.3	74.8	4.0	3.0	2.1	9.1	2.0	2.1	0.6	77.1	4.0	18.9	0.086	0.582	19.479990	-98.365392
Hueyotlipan	88.21	3	1	12086	2.0	74.8	3.7	6.1	1.5	7.4	1.9	2.0	0.6	76.8	3.7	19.5	0.086	0.591	19.468244	-98.327939
Hueyotlipan	88.21	3	2	11414	2.0	74.4	3.8	6.0	1.6	7.6	1.8	2.2	0.6	76.4	3.8	19.8	0.087	0.591	19.469532	-98.324685
T. Libramiento HueyotlipanEste	89.51																			
T. C. Libramiento de Santiago Tlalpan	93.40	3	1	15661	2.0	70.8	5.0	3.4	2.7	10.0	2.7	2.7	0.7	72.8	5.0	22.2	0.067	0.708	19.483783	-98.295364
T. C. Libramiento de Santiago Tlalpan	93.40	3	2	16589	2.0	71.5	5.2	3.6	2.4	9.8	2.5	2.4	0.6	73.5	5.2	21.3	0.079	0.708	19.483854	-98.295261
Ent. Xipetzinco	94.90	3	1	11280	2.0	72.3	4.3	6.0	2.2	8.7	2.0	2.1	0.4	74.3	4.3	21.4	0.067	0.593	19.484527	-98.280605
Ent. Xipetzinco	94.90	3	2	12061	1.7	72.9	4.0	5.8	2.5	8.4	1.9	2.3	0.5	74.6	4.0	21.4	0.092	0.593	19.484516	-98.281059
Xaltocan	108.10	1	1	12990	1.6	74.3	2.7	6.2	2.5	7.9	2.2	1.9	0.7	75.9	2.7	21.4	0.069	0.634	19.423880	-98.215916
Xaltocan	108.10	1	2	12912	1.5	75.7	2.6	6.1	2.2	7.8	2.0	1.6	0.5	77.2	2.6	20.2	0.107	0.634	19.423756	-98.215503

TLAXCALA

9 CARR: Los Reyes - Zacatepec

CLAVE: 00052

RUTA: MEX-136

AÑO: 2025

LUGAR	ESTACION				CLASIFICACION VEHICULAR EN PORCIENTO										COORDENADAS					
	KM	TE	SC	TDPA	M	A	B	C2	C3	T3S2	T3S3	T3S2R4	OTROS	A	B	C	K'	D	LATITUD	LONGITUD
T. C. Libramiento de Apizaco Oeste	111.30	1	1	16886	2.0	81.2	4.4	1.9	3.0	3.8	1.7	1.6	0.4	83.2	4.4	12.4	0.074	0.527	19.397253	-98.182162
T. C. Libramiento de Apizaco Oeste	111.30	1	2	17509	2.4	80.5	4.7	2.0	2.9	3.6	1.7	1.8	0.4	82.9	4.7	12.4	0.076	0.527	19.397291	-98.182083
Apizaco	117.74	1	1	24911	3.7	86.6	1.4	4.7	0.7	1.3	0.9	0.3	0.4	90.3	1.4	8.3	0.076	0.537	19.405503	-98.170906
Apizaco	117.74	1	2	25863	3.7	86.6	1.6	4.8	0.6	1.2	0.8	0.3	0.4	90.3	1.6	8.1	0.078	0.537	19.404370	-98.171592
Apizaco	117.74	3	0	20171	2.1	88.4	1.2	6.5	0.5	0.6	0.3	0.2	0.2	90.5	1.2	8.3	0.081	0.566	19.412572	-98.133025
T. Der. Cuaxomulco	119.85	3	1	17115	4.5	89.4	0.9	3.6	0.7	0.4	0.2	0.2	0.1	93.9	0.9	5.2	0.069	0.527	19.413212	-98.115245
T. Der. Cuaxomulco	119.85	3	2	17681	4.3	89.2	1.0	3.8	0.8	0.4	0.2	0.2	0.1	93.5	1.0	5.5	0.071	0.527	19.413271	-98.115224
T. Libramiento de Apizaco Este	122.70	3	1	20106	2.4	82.3	2.8	3.5	1.8	3.9	1.3	1.6	0.4	84.7	2.8	12.5	0.080	0.553	19.405225	-98.089322
T. Libramiento de Apizaco Este	122.70	3	2	19401	2.6	82.3	2.6	3.6	1.6	3.8	1.4	1.7	0.4	84.9	2.6	12.5	0.068	0.553	19.405309	-98.089303
T. Izq. Xalostoc	126.67	3	1	14568	3.3	75.5	3.5	6.4	2.0	5.3	1.8	1.8	0.4	78.8	3.5	17.7	0.086	0.504	19.389630	-98.052602
T. Izq. Xalostoc	126.67	3	2	14956	3.5	74.9	3.2	6.0	2.2	5.6	2.0	2.1	0.5	78.4	3.2	18.4	0.081	0.504	19.389678	-98.052523
T. Izq. Libramiento de Huamantla	141.70	1	1	14335	2.2	77.4	3.9	5.0	2.1	5.9	1.4	1.7	0.4	79.6	3.9	16.5	0.089	0.590	19.325212	-97.953253
T. Izq. Libramiento de Huamantla	141.70	1	2	14476	2.1	76.7	4.3	5.2	2.2	6.0	1.4	1.7	0.4	78.8	4.3	16.9	0.096	0.590	19.325282	-97.953202
Huamantla	143.02	3	1	12959	4.6	74.0	4.4	4.6	2.2	6.1	2.0	1.6	0.5	78.6	4.4	17.0	0.078	0.503	19.315277	-97.884844
Huamantla	143.02	3	2	11146	4.5	74.0	4.3	4.6	1.9	6.4	2.2	1.7	0.4	78.5	4.3	17.2	0.080	0.503	19.315361	-97.884828
T. Libramiento de Huamantla Este	144.42																			
X. C. Amozoc - Perote (Cuota)	156.76	1	1	11000	2.3	72.3	4.5	6.0	2.2	6.3	4.2	1.8	0.4	74.6	4.5	20.9	0.081	0.536	19.308194	-97.809207
X. C. Amozoc - Perote (Cuota)	156.76	1	2	10859	2.4	72.6	4.2	5.9	2.0	6.5	4.2	1.8	0.4	75.0	4.2	20.8	0.074	0.536	19.308275	-97.809189
X. C. Amozoc - Perote (Cuota)	156.76	3	0	20625	3.9	71.1	4.5	5.0	3.8	6.4	2.0	2.6	0.7	75.0	4.5	20.5	0.059	0.516	19.305359	-97.791682
T. Der. Cuapiaxtla	159.40	1	0	12954	2.8	71.1	4.1	7.8	3.4	5.9	3.5	1.1	0.3	73.9	4.1	22.0	0.075	0.555	19.303677	-97.781271
X. C. Amozoc - Teziutlán	173.47	1	0	8036	2.6	70.5	3.8	4.7	3.8	7.7	4.7	1.7	0.5	73.1	3.8	23.1	0.081	0.565	19.327800	-97.672820
X. C. Amozoc - Teziutlán	173.47	3	0	5449	4.4	57.6	3.2	3.7	7.7	11.2	9.1	2.4	0.7	62.0	3.2	34.8	0.075	0.710	19.313459	-97.627823
Lim. Edos. Term. Tlax. Ppia. Pue.	177.57																			
Zacatepec	187.67	1	0	5763	3.6	59.4	4.2	4.8	5.1	12.5	7.5	2.4	0.5	63.0	4.2	32.8	0.086	0.533	19.271408	-97.543684

10 CARR: Los Tréboles - Tlaxcala

CLAVE:

RUTA: MEX-117

AÑO: 2025

LUGAR	ESTACION				CLASIFICACION VEHICULAR EN PORCIENTO										COORDENADAS					
	KM	TE	SC	TDPA	M	A	B	C2	C3	T3S2	T3S3	T3S2R4	OTROS	A	B	C	K'	D	LATITUD	LONGITUD
Los Treboles	0.00	3	0	19480	5.3	90.4	0.7	2.0	0.5	0.3	0.2	0.3	0.3	95.7	0.7	3.6	0.087	0.641	19.319483	-98.245205
Tlaxcala	0.94																			

TLAXCALA

11 CARR: Puebla - Belem

CLAVE: 00055

RUTA: MEX-121

AÑO: 2025

LUGAR	ESTACION				CLASIFICACION VEHICULAR EN PORCIENTO										COORDENADAS					
	KM	TE	SC	TDPA	M	A	B	C2	C3	T3S2	T3S3	T3S2R4	OTROS	A	B	C	K'	D	LATITUD	LONGITUD
T. C. Puebla - Tlaxcala	0.00																			
X. C. Puebla - Acatzingo (Cuota)	4.00	3	1	23733	5.1	87.4	0.8	4.3	1.0	1.0	0.2	0.2	0.0	92.5	0.8	6.7	0.087	0.555	19.101918	-98.182600
X. C. Puebla - Acatzingo (Cuota)	4.00	3	2	23491	5.0	87.3	0.6	4.7	1.0	0.9	0.2	0.2	0.1	92.3	0.6	7.1	0.087	0.555	19.101985	-98.182715
Lim. Edos. Term. Pue. Ppia. Tlax.	6.60																			
Lim. Edos. Term. Tlax. Ppia. Pue.	9.77																			
Lim. Edos. Term. Pue. Ppia. Tlax.	10.25																			
T. Izq. Zacatelco	16.70	1	1	15989	2.8	88.6	1.4	4.0	0.9	1.5	0.4	0.3	0.1	91.4	1.4	7.2	0.084	0.570	19.204133	-98.195316
T. Izq. Zacatelco	16.70	1	2	15946	2.6	89.1	1.1	4.2	1.1	1.0	0.4	0.3	0.2	91.7	1.1	7.2	0.075	0.570	19.204133	-98.195453
X. C. Tlaxcala - Belem	28.80	1	1	19956	8.2	83.8	1.4	3.4	0.8	1.2	0.4	0.2	0.6	92.0	1.4	6.6	0.083	0.515	19.316677	-98.203686
X. C. Tlaxcala - Belem	28.80	1	2	19257	8.5	83.7	1.2	3.0	1.1	1.4	0.2	0.2	0.7	92.2	1.2	6.6	0.081	0.515	19.316713	-98.203758
T. C. San Martín Texmelucan - Ocotoxco (Cuota)	34.90																			

12 CARR: Puebla - Tlaxcala

CLAVE: 00475

RUTA: MEX-119

AÑO: 2025

LUGAR	ESTACION				CLASIFICACION VEHICULAR EN PORCIENTO										COORDENADAS					
	KM	TE	SC	TDPA	M	A	B	C2	C3	T3S2	T3S3	T3S2R4	OTROS	A	B	C	K'	D	LATITUD	LONGITUD
Puebla	0.00																			
X. C. Puebla - Acatzingo (Cuota) Lateral	5.41	3	1	3192	8.5	86.0	0.7	2.3	0.9	0.8	0.6	0.1	0.1	94.5	0.7	4.8	0.087	0.566	19.097342	-98.207137
X. C. Puebla - Acatzingo (Cuota) Central	5.41	3	1	11139	8.0	83.5	0.7	2.6	1.5	1.4	0.4	1.3	0.6	91.5	0.7	7.8	0.067	0.566	19.097420	-98.207225
X. C. Puebla - Acatzingo (Cuota) Lateral	5.41	3	2	3607	8.7	85.6	0.8	2.3	1.1	0.8	0.7	0.0	0.0	94.3	0.8	4.9	0.109	0.566	19.097213	-98.207358
X. C. Puebla - Acatzingo (Cuota) Central	5.41	3	2	10522	8.0	83.2	0.9	3.0	1.5	1.4	0.3	1.3	0.4	91.2	0.9	7.9	0.075	0.566	19.097476	-98.207303
Lim. Edos. Term. Pue. Ppia. Tlax.	11.83																			
Panzacola	13.14	3	1	12643	5.3	88.9	1.0	2.8	0.8	0.6	0.1	0.3	0.2	94.2	1.0	4.8	0.081	0.549	19.152212	-98.223586
Panzacola	13.14	3	2	12492	5.3	89.2	0.8	2.4	0.9	0.8	0.2	0.2	0.2	94.5	0.8	4.7	0.069	0.549	19.152213	-98.223718
San Toribio Xicohtzinco	16.10	3	1	10871	4.0	89.5	0.7	4.8	0.4	0.4	0.1	0.1	0.0	93.5	0.7	5.8	0.075	0.549	19.187376	-98.237822
San Toribio Xicohtzinco	16.10	3	2	11034	4.0	89.4	0.8	4.6	0.5	0.3	0.1	0.2	0.1	93.4	0.8	5.8	0.072	0.549	19.187376	-98.237893
Zacatelco	20.78	1	1	10992	4.3	90.3	0.6	3.9	0.4	0.2	0.2	0.1	0.0	94.6	0.6	4.8	0.077	0.554	19.208072	-98.240641
Zacatelco	20.78	1	2	10350	4.2	90.3	0.8	3.8	0.4	0.3	0.1	0.1	0.0	94.5	0.8	4.7	0.075	0.554	19.208063	-98.240714
T. Izq. San Martín Texmelucan	22.99	1	1	12592	5.5	90.1	0.8	2.3	0.5	0.4	0.2	0.1	0.1	95.6	0.8	3.6	0.074	0.502	19.233768	-98.242980
T. Izq. San Martín Texmelucan	22.99	1	2	12062	5.6	90.2	0.6	2.4	0.5	0.4	0.1	0.1	0.1	95.8	0.6	3.6	0.078	0.502	19.233742	-98.243093
T. Der. Tepeyanco (2º Acceso)	24.97	3	1	11319	3.4	93.4	0.5	1.9	0.4	0.3	0.0	0.1	0.0	96.8	0.5	2.7	0.081	0.535	19.249966	-98.235229
T. Der. Tepeyanco (2º Acceso)	24.97	3	2	10983	3.6	93.0	0.5	2.0	0.5	0.3	0.0	0.1	0.0	96.6	0.5	2.9	0.073	0.535	19.250044	-98.235250
T. Der. Ocotlán (Alta)	32.45	1	1	8339	3.8	92.4	0.5	1.2	0.8	0.5	0.3	0.2	0.3	96.2	0.5	3.3	0.089	0.513	19.302759	-98.241093
T. Der. Ocotlán (Baja)	32.45	1	1	4471	1.1	92.9	0.8	3.0	0.5	0.8	0.5	0.3	0.1	94.0	0.8	5.2	0.080	0.513	19.302714	-98.241006
T. Der. Ocotlán (Alta)	32.45	1	2	8512	4.0	91.6	0.5	1.4	1.0	0.5	0.4	0.2	0.4	95.6	0.5	3.9	0.085	0.513	19.302816	-98.241196

TLAXCALA

12 CARR: Puebla - Tlaxcala

CLAVE: 00475

RUTA: MEX-119

AÑO: 2025

LUGAR	ESTACION				CLASIFICACION VEHICULAR EN PORCIENTO										COORDENADAS					
	KM	TE	SC	TDPA	M	A	B	C2	C3	T3S2	T3S3	T3S2R4	OTROS	A	B	C	K'	D	LATITUD	LONGITUD
T. Der. Ocotlán (Baja)	32.45	1	2	4236	1.2	92.7	1.0	3.1	0.3	0.6	0.7	0.3	0.1	93.9	1.0	5.1	0.086	0.513	19.302836	-98.241283
Tlaxcala	33.22	1	1	9322	5.2	89.8	0.6	2.1	0.6	0.5	0.3	0.7	0.2	95.0	0.6	4.4	0.097	0.597	19.308239	-98.240699
Tlaxcala	33.22	1	2	8280	4.9	90.2	0.5	1.9	0.4	0.6	0.4	0.8	0.3	95.1	0.5	4.4	0.083	0.597	19.308243	-98.240748

13 CARR: Ramal a San Felipe de Hidalgo

CLAVE: 29565

RUTA: MEX-136

AÑO: 2025

LUGAR	ESTACION				CLASIFICACION VEHICULAR EN PORCIENTO										COORDENADAS					
	KM	TE	SC	TDPA	M	A	B	C2	C3	T3S2	T3S3	T3S2R4	OTROS	A	B	C	K'	D	LATITUD	LONGITUD
T. C. Los Reyes - Zacatepec	0.00	3	0	4134	3.3	90.7	0.6	3.8	1.0	0.3	0.1	0.2	0.0	94.0	0.6	5.4	0.081	0.545	19.525008	-98.484965
San Felipe de Hidalgo	10.50	1	0	1858	16.4	80.6	0.6	1.9	0.3	0.2	0.0	0.0	0.0	97.0	0.6	2.4	0.089	0.503	19.474918	-98.552144

14 CARR: San Martín Texmelucan - Tlaxcala

CLAVE: 00158

RUTA: MEX-117

AÑO: 2025

LUGAR	ESTACION				CLASIFICACION VEHICULAR EN PORCIENTO										COORDENADAS					
	KM	TE	SC	TDPA	M	A	B	C2	C3	T3S2	T3S3	T3S2R4	OTROS	A	B	C	K'	D	LATITUD	LONGITUD
San Martín Texmelucan	0.00	3	1	11789	7.2	81.3	0.8	4.8	1.5	1.4	1.7	0.8	0.5	88.5	0.8	10.7	0.077	0.525	19.287895	-98.423008
San Martín Texmelucan	0.00	3	2	11067	7.2	81.8	0.7	4.9	1.4	1.2	1.5	0.8	0.5	89.0	0.7	10.3	0.076	0.525	19.287978	-98.423145
X. C. San Martín Texmelucan - Ocotoxco (Cuota)	1.65	3	0	20235	7.5	83.3	1.0	5.8	0.9	0.5	0.6	0.2	0.2	90.8	1.0	8.2	0.084	0.572	19.291523	-98.411871
Lim. Edos. Term. Pue. Ppia. Tlax.	2.84																			
T. Der. Tepetitla	3.45	3	1	7385	15.1	80.1	0.5	2.2	0.6	0.7	0.2	0.4	0.2	95.2	0.5	4.3	0.085	0.537	19.294056	-98.403879
T. Der. Tepetitla	3.45	3	2	6788	14.3	80.9	0.5	2.0	0.7	0.7	0.2	0.4	0.3	95.2	0.5	4.3	0.080	0.537	19.294143	-98.403910
San Diego Xocoyucan	7.21	3	0	7727	7.4	87.7	0.6	2.2	0.6	0.9	0.3	0.3	0.0	95.1	0.6	4.3	0.089	0.668	19.307934	-98.369221
T. Der. Panotla	19.72	1	0	8413	7.8	88.0	0.5	2.7	0.5	0.3	0.1	0.1	0.0	95.8	0.5	3.7	0.090	0.517	19.319507	-98.276255
T. Der. Panotla	19.72	3	0	9739	6.4	89.1	0.7	2.1	0.6	0.8	0.2	0.1	0.0	95.5	0.7	3.8	0.086	0.524	19.319647	-98.269290
Totolac	21.38	1	0	9451	4.7	92.0	0.6	1.6	0.4	0.3	0.2	0.2	0.0	96.7	0.6	2.7	0.085	0.551	19.322523	-98.260530
Totolac	21.38	3	0	14771	7.7	87.5	0.5	1.6	0.4	0.6	0.5	0.8	0.4	95.2	0.5	4.3	0.073	0.552	19.329768	-98.250160
Tlaxcala	24.81	1	0	13905	5.6	89.3	0.3	1.4	0.6	0.8	0.7	0.9	0.4	94.9	0.3	4.8	0.077	0.569	19.325938	-98.246952

15 CARR: San Pablo Apetatitlán - Apizaco

CLAVE: 29035

RUTA: MEX-119

AÑO: 2025

LUGAR	ESTACION				CLASIFICACION VEHICULAR EN PORCIENTO										COORDENADAS					
	KM	TE	SC	TDPA	M	A	B	C2	C3	T3S2	T3S3	T3S2R4	OTROS	A	B	C	K'	D	LATITUD	LONGITUD
San Pablo Apetatitlán	0.00	3	0	16911	4.5	88.8	0.5	2.6	0.7	0.6	1.3	0.6	0.4	93.3	0.5	6.2	0.072	0.543	19.335824	-98.190193
T. Der. Contla	1.00	3	0	11793	11.0	84.3	0.7	2.7	0.5	0.4	0.3	0.1	0.0	95.3	0.7	4.0	0.078	0.547	19.342798	-98.178613
Santa Cruz Tlaxcala	5.00	1	0	6875	8.7	85.7	1.1	2.8	0.8	0.4	0.2	0.2	0.1	94.4	1.1	4.5	0.075	0.514	19.353536	-98.158642

TLAXCALA

15 CARR: San Pablo Apetatitlán - Apizaco

CLAVE: 29035

RUTA: MEX-119

AÑO: 2025

LUGAR	ESTACION				CLASIFICACION VEHICULAR EN PORCIENTO										COORDENADAS					
	KM	TE	SC	TDPA	M	A	B	C2	C3	T3S2	T3S3	T3S2R4	OTROS	A	B	C	K'	D	LATITUD	LONGITUD
Cuaxomulco	10.80	1	0	3213	12.2	83.0	1.0	2.7	0.8	0.1	0.1	0.1	0.0	95.2	1.0	3.8	0.082	0.557	19.355797	-98.105787
T. Izq. Tecnológico	19.87	1	0	12216	7.2	90.4	0.4	1.4	0.2	0.2	0.1	0.1	0.0	97.6	0.4	2.0	0.083	0.554	19.405268	-98.117366
T. C. Los Reyes - Zacatepec	20.00	1	0	8989	4.2	91.8	0.7	2.3	0.5	0.3	0.1	0.1	0.0	96.0	0.7	3.3	0.097	0.515	19.410349	-98.118777

16 CARR: T. C. (Puebla - Tlaxcala) - Villa Alta

CLAVE: 29566

RUTA: MEX-119

AÑO: 2025

LUGAR	ESTACION				CLASIFICACION VEHICULAR EN PORCIENTO										COORDENADAS					
	KM	TE	SC	TDPA	M	A	B	C2	C3	T3S2	T3S3	T3S2R4	OTROS	A	B	C	K'	D	LATITUD	LONGITUD
T. C. Puebla - Tlaxcala	0.00	3	0	10812	5.7	84.5	0.5	7.2	0.4	0.5	0.3	0.3	0.6	90.2	0.5	9.3	0.074	0.506	19.234594	-98.245086
Nativitas	9.30	1	0	9337	6.5	85.9	0.6	4.4	0.5	0.6	0.7	0.4	0.4	92.4	0.6	7.0	0.081	0.507	19.238396	-98.308373
T. C. San Martín Texmelucan - Tlaxcala	23.50	1	0	9447	18.9	76.0	0.6	2.5	0.8	0.3	0.5	0.3	0.1	94.9	0.6	4.5	0.091	0.525	19.284961	-98.401796

17 CARR: Tetlatlahuca - Santa Ana Chiautempan

CLAVE: 00158

RUTA: MEX-119

AÑO: 2025

LUGAR	ESTACION				CLASIFICACION VEHICULAR EN PORCIENTO										COORDENADAS					
	KM	TE	SC	TDPA	M	A	B	C2	C3	T3S2	T3S3	T3S2R4	OTROS	A	B	C	K'	D	LATITUD	LONGITUD
Tetlatlahuca	0.00																			
San Bartolomé Tenango	2.39	1	0	5129	9.8	85.9	0.2	1.2	1.0	0.8	0.2	0.8	0.1	95.7	0.2	4.1	0.076	0.535	19.246621	-98.296751
San Damián Texoloc	5.50	1	0	4999	9.2	86.3	0.4	2.3	1.0	0.3	0.1	0.3	0.1	95.5	0.4	4.1	0.080	0.548	19.272529	-98.284709
San Damián Texoloc	5.50	3	0	7756	4.8	87.2	0.7	3.4	0.7	2.3	0.6	0.2	0.1	92.0	0.7	7.3	0.081	0.532	19.279924	-98.272353
T. Izq. Cuauhtelulpan	9.63	1	0	11072	3.2	92.3	0.8	1.4	0.8	0.6	0.4	0.4	0.1	95.5	0.8	3.7	0.084	0.506	19.288501	-98.251407
T. Izq. Cuauhtelulpan	9.63	3	0	21993	3.4	92.3	0.6	1.0	0.6	0.5	0.3	1.1	0.2	95.7	0.6	3.7	0.080	0.599	19.291827	-98.249749
T. Der. Puebla	9.94	1	0	13199	2.9	92.9	0.6	1.5	0.6	0.4	0.3	0.5	0.3	95.8	0.6	3.6	0.076	0.502	19.301004	-98.245515
T. C. Tlaxcala - Belem	16.00	1	1	12267	4.5	91.5	0.4	0.6	1.0	0.4	0.8	0.5	0.3	96.0	0.4	3.6	0.071	0.554	19.317696	-98.214607
T. C. Tlaxcala - Belem	16.00	1	2	12799	4.7	91.3	0.3	0.8	0.8	0.3	0.9	0.7	0.2	96.0	0.3	3.7	0.077	0.554	19.317800	-98.214413

18 CARR: Tlaxcala - Belem

CLAVE: 29389

RUTA: MEX-119

AÑO: 2025

LUGAR	ESTACION				CLASIFICACION VEHICULAR EN PORCIENTO										COORDENADAS					
	KM	TE	SC	TDPA	M	A	B	C2	C3	T3S2	T3S3	T3S2R4	OTROS	A	B	C	K'	D	LATITUD	LONGITUD
Tlaxcala	0.00																			
T. Der. Ocotlán	3.91	1	1	14484	4.7	90.1	0.4	2.5	0.6	0.5	0.7	0.3	0.2	94.8	0.4	4.8	0.079	0.500	19.325640	-98.215755
T. Der. Ocotlán	3.91	1	2	12610	4.5	89.9	0.5	2.3	0.7	0.6	0.9	0.3	0.3	94.4	0.5	5.1	0.082	0.500	19.325714	-98.215644
X. C. Puebla - Belem	4.55	1	1	24170	4.6	89.9	0.5	2.1	0.7	1.0	0.4	0.5	0.3	94.5	0.5	5.0	0.071	0.520	19.319141	-98.206170
X. C. Puebla - Belem	4.55	1	2	22327	4.4	90.3	0.6	2.0	0.6	0.8	0.3	0.6	0.4	94.7	0.6	4.7	0.066	0.520	19.319230	-98.206087

TLAXCALA

18 CARR: Tlaxcala - Belem

CLAVE: 29389

RUTA: MEX-119

AÑO: 2025

LUGAR	ESTACION				CLASIFICACION VEHICULAR EN PORCIENTO										COORDENADAS					
	KM	TE	SC	TDPA	M	A	B	C2	C3	T3S2	T3S3	T3S2R4	OTROS	A	B	C	K'	D	LATITUD	LONGITUD
Santa Ana Chiautempan	5.82	1	1	12911	6.2	89.3	0.3	1.7	0.8	0.4	0.2	0.8	0.3	95.5	0.3	4.2	0.077	0.517	19.316658	-98.201791
Santa Ana Chiautempan	5.82	1	2	12615	6.4	89.4	0.3	1.6	0.5	0.5	0.4	0.6	0.3	95.8	0.3	3.9	0.081	0.517	19.316712	-98.201729
T. Der. Ixcotta	7.19	3	1	9601	4.2	93.0	0.3	1.3	0.3	0.4	0.3	0.1	0.1	97.2	0.3	2.5	0.084	0.518	19.327012	-98.193972
T. Der. Ixcotta	7.19	3	2	10115	4.3	93.1	0.2	1.4	0.3	0.3	0.2	0.1	0.1	97.4	0.2	2.4	0.083	0.518	19.327075	-98.194090
Belem	10.06	1	0	7263	5.4	90.5	0.6	2.3	0.6	0.2	0.3	0.1	0.0	95.9	0.6	3.5	0.076	0.506	19.337540	-98.193304

19 CARR: Amozoc - Perote (Cuota)

CLAVE: 00030

RUTA: MEX-140D

AÑO: 2025

LUGAR	ESTACION				CLASIFICACION VEHICULAR EN PORCIENTO										COORDENADAS					
	KM	TE	SC	TDPA	M	A	B	C2	C3	T3S2	T3S3	T3S2R4	OTROS	A	B	C	K'	D	LATITUD	LONGITUD
T. C. Puebla - Acatzingo (Cuota)	0.00	3	0	12139	3.1	70.0	7.9	4.8	2.4	6.8	1.1	3.1	0.8	73.1	7.9	19.0	0.079	0.602	19.071799	-98.062860
Plaza de Cobro Amozoc	0.68	2	0	12220	0.7	71.5	5.2	4.1	3.9	8.7	1.1	4.0	0.8	72.2	5.2	22.6	0.085	0.500	19.063641	-98.069094
Lim. Edos. Term. Pue. Ppia. Tlax.	20.08																			
X. C. Huamantla - La Venta	25.80	3	0	12399	3.4	71.7	7.1	4.3	2.9	6.6	1.2	2.3	0.5	75.1	7.1	17.8	0.076	0.572	19.228171	-97.897041
Lim. Edos. Term. Tlax. Ppia. Pue.	30.50																			
Lim. Edos. Term. Pue. Ppia. Tlax.	31.26																			
Lim. Edos. Term. Tlax. Ppia. Pue.	31.67																			
Lim. Edos. Term. Pue. Ppia. Tlax.	38.93																			
Plaza de Cobro Cuapiaxtla	40.34	2	0	6914	0.6	71.6	3.6	4.1	4.2	8.7	1.0	5.2	1.0	72.2	3.6	24.2	0.085	0.500	19.310369	-97.797544
Lim. Edos. Term. Tlax. Ppia. Pue.	54.50																			
T. Der. Oriental	61.45	1	0	16412	3.3	69.1	7.5	4.8	2.6	5.9	2.0	3.8	1.0	72.4	7.5	20.1	0.078	0.594	19.411329	-97.651407
T. Der. Oriental	61.45	3	1	7151	2.2	64.1	8.0	5.2	3.4	9.3	2.3	4.7	0.8	66.3	8.0	25.7	0.065	0.587	19.421016	-97.637109
T. Der. Oriental	61.45	3	2	7275	1.9	64.7	8.3	5.2	3.1	9.0	2.1	4.9	0.8	66.6	8.3	25.1	0.094	0.587	19.421008	-97.637204
T. Izq. Teziutlán	62.70	3	0	9763	2.7	59.6	9.3	5.9	3.2	9.9	2.5	5.9	1.0	62.3	9.3	28.4	0.073	0.541	19.426498	-97.629950
X. C. Tepeyahualco - Cantoná	80.10	3	0	12138	8.5	54.9	10.4	5.7	2.7	8.9	2.7	5.5	0.7	63.4	10.4	26.2	0.063	0.560	19.508220	-97.492429
Lim. Edos. Term. Pue. Ppia. Ver.	90.36																			
T. C. Lib. de Perote	105.00																			

20 CARR: Libramiento de Tlaxcala (Cuota)

CLAVE:

RUTA: MEX-117D

AÑO: 2025

LUGAR	ESTACION				CLASIFICACION VEHICULAR EN PORCIENTO										COORDENADAS					
	KM	TE	SC	TDPA	M	A	B	C2	C3	T3S2	T3S3	T3S2R4	OTROS	A	B	C	K'	D	LATITUD	LONGITUD
T. C. San Martín Texmelucan - Ocotoxco (Cuota)	0.00	3	1	15470	2.6	89.9	1.4	3.2	0.7	1.2	0.5	0.4	0.1	92.5	1.4	6.1	0.085	0.528	19.315778	-98.257726
T. C. San Martín Texmelucan - Ocotoxco (Cuota)	0.00	3	2	14584	2.4	90.7	1.2	3.0	0.7	1.0	0.5	0.4	0.1	93.1	1.2	5.7	0.082	0.528	19.315679	-98.257699
X. C. Puebla - Tlaxcala	6.50	1	1	12214	2.1	92.6	0.8	2.0	0.7	0.8	0.6	0.3	0.1	94.7	0.8	4.5	0.086	0.518	19.295295	-98.253133

TLAXCALA

20 CARR: Libramiento de Tlaxcala (Cuota)

CLAVE:

RUTA: MEX-117D

AÑO: 2025

LUGAR	ESTACION				CLASIFICACION VEHICULAR EN PORCIENTO										COORDENADAS					
	KM	TE	SC	TDPA	M	A	B	C2	C3	T3S2	T3S3	T3S2R4	OTROS	A	B	C	K'	D	LATITUD	LONGITUD
X. C. Puebla - Tlaxcala	6.50	1	2	12275	2.5	91.9	1.0	2.4	0.8	0.6	0.4	0.3	0.1	94.4	1.0	4.6	0.080	0.518	19.295291	-98.253025
X. C. Puebla - Tlaxcala	6.50	3	1	17892	4.1	91.7	0.5	1.3	0.7	0.9	0.5	0.2	0.1	95.8	0.5	3.7	0.082	0.529	19.286944	-98.234427
X. C. Puebla - Tlaxcala	6.50	3	2	18635	3.9	91.6	0.7	1.6	0.7	0.6	0.5	0.2	0.2	95.5	0.7	3.8	0.072	0.529	19.287029	-98.234481
T. C. Puebla - Belén Atzitzimitlan	11.00	1	1	15653	3.5	91.3	0.8	1.7	0.6	1.0	0.5	0.4	0.2	94.8	0.8	4.4	0.089	0.510	19.301888	-98.203199
T. C. Puebla - Belén Atzitzimitlan	11.00	1	2	15143	3.2	92.4	0.5	1.4	0.8	0.8	0.5	0.3	0.1	95.6	0.5	3.9	0.082	0.510	19.301966	-98.203221

21 CARR: Libramiento Norte de la Ciudad de México (Cuota)

CLAVE: 0902

RUTA: MEX-055D

AÑO: 2025

LUGAR	ESTACION				CLASIFICACION VEHICULAR EN PORCIENTO										COORDENADAS					
	KM	TE	SC	TDPA	M	A	B	C2	C3	T3S2	T3S3	T3S2R4	OTROS	A	B	C	K'	D	LATITUD	LONGITUD
T. C. Toluca - Palmillas	0.00																			
X. C. Toluca - Palmillas	12.90	1	1	6522	3.6	57.9	7.6	4.5	2.6	15.8	1.8	5.4	0.8	61.5	7.6	30.9	0.079	0.510	19.916093	-99.850993
X. C. Toluca - Palmillas	12.90	1	2	6786	3.3	57.6	7.7	4.4	2.6	15.9	2.0	5.6	0.9	60.9	7.7	31.4	0.084	0.510	19.916387	-99.851101
X. C. Toluca - Palmillas	12.90	3	1	6774	5.8	56.2	7.8	4.9	3.0	14.5	1.7	5.2	0.9	62.0	7.8	30.2	0.084	0.509	19.922884	-99.836748
X. C. Toluca - Palmillas	12.90	3	2	6544	5.8	56.1	7.7	4.7	3.0	14.8	1.6	5.3	1.0	61.9	7.7	30.4	0.076	0.509	19.923129	-99.836797
C. P. Jilotepec	48.70	1	1	6921	3.8	59.0	8.7	5.1	2.9	13.3	1.5	4.8	0.9	62.8	8.7	28.5	0.065	0.527	19.969025	-99.538005
C. P. Jilotepec	48.70	1	2	6220	3.8	58.4	8.8	5.1	2.8	14.2	1.2	4.8	0.9	62.2	8.8	29.0	0.067	0.527	19.969163	-99.538155
C. P. Jilotepec	48.70	3	1	8509	3.8	57.8	7.2	5.8	2.8	15.2	2.0	4.6	0.8	61.6	7.2	31.2	0.069	0.504	19.980003	-99.516548
C. P. Jilotepec	48.70	3	2	8643	3.2	55.0	7.6	6.5	3.3	16.1	2.3	5.2	0.8	58.2	7.6	34.2	0.064	0.504	19.980412	-99.515964
X. C. México - Querétaro	54.00	3	1	9266	4.5	50.6	7.8	5.1	3.2	17.2	4.0	6.7	0.9	55.1	7.8	37.1	0.082	0.515	20.003079	-99.483508
X. C. México - Querétaro	54.00	3	2	9856	4.3	53.1	7.8	5.2	3.0	15.3	3.4	7.0	0.9	57.4	7.8	34.8	0.071	0.515	20.003089	-99.483658
Plaza de Cobro Querétaro	55.00	3	1	9570	0.5	52.5	2.2	4.5	5.5	19.6	4.3	8.0	2.9	53.0	2.2	44.8	0.067	0.500	19.998714	-99.487788
Plaza de Cobro Querétaro	55.00	3	2	9790	0.5	53.3	2.2	4.5	5.4	19.3	4.2	7.8	2.8	53.8	2.2	44.0	0.067	0.500	19.998714	-99.487788
Lim. Edos. Term. Méx. Ppia. Hgo.	60.72																			
X. C. Ent. Tepeji del Río - Tlahuelilpan	79.00	1	1	10614	5.8	50.2	7.9	5.9	4.7	15.2	3.1	6.2	1.0	56.0	7.9	36.1	0.081	0.524	20.097437	-99.290401
X. C. Ent. Tepeji del Río - Tlahuelilpan	79.00	1	2	11684	5.4	51.1	7.7	5.7	4.8	15.0	3.3	6.1	0.9	56.5	7.7	35.8	0.063	0.524	20.097511	-99.290419
X. C. Ent. Tepeji del Río - Tlahuelilpan	79.00	3	1	12490	6.6	57.4	5.6	5.1	3.1	12.5	3.4	5.4	0.9	64.0	5.6	30.4	0.074	0.503	20.094023	-99.271049
X. C. Ent. Tepeji del Río - Tlahuelilpan	79.00	3	2	12338	6.3	57.9	5.8	5.3	3.0	12.7	3.0	5.2	0.8	64.2	5.8	30.0	0.084	0.503	20.094088	-99.270856
X. C. Los Reyes - El Tephé	86.40	1	1	13321	2.8	55.3	6.0	5.4	3.1	16.4	3.7	6.4	0.9	58.1	6.0	35.9	0.066	0.502	20.070242	-99.228235
X. C. Los Reyes - El Tephé	86.40	1	2	13222	3.1	55.4	5.8	5.2	3.3	16.0	3.7	6.7	0.8	58.5	5.8	35.7	0.065	0.502	20.070098	-99.227673
X. C. Los Reyes - El Tephé	86.40	3	1	13063	3.1	57.9	4.7	7.2	2.7	13.9	3.4	6.3	0.8	61.0	4.7	34.3	0.071	0.521	20.064819	-99.213860
X. C. Los Reyes - El Tephé	86.40	3	2	12001	3.2	57.7	5.0	6.9	3.0	14.0	3.2	6.2	0.8	60.9	5.0	34.1	0.063	0.521	20.064964	-99.213810
Lim. Edos. Term. Hgo. Ppia. Méx.	95.75																			
X. C. (Los Reyes - El Tephé) - Tianguistongo	108.60	1	1	12950	6.3	55.1	5.7	4.8	3.1	14.6	2.7	6.8	0.9	61.4	5.7	32.9	0.085	0.501	19.958449	-99.067686
X. C. (Los Reyes - El Tephé) - Tianguistongo	108.60	1	2	13012	6.0	55.1	5.9	4.6	2.9	14.4	3.1	7.1	0.9	61.1	5.9	33.0	0.090	0.501	19.958597	-99.067668

TLAXCALA

21 CARR: Libramiento Norte de la Ciudad de México (Cuota)

CLAVE: 0902

RUTA: MEX-055D

AÑO: 2025

LUGAR	ESTACION				CLASIFICACION VEHICULAR EN PORCIENTO										COORDENADAS					
	KM	TE	SC	TDPA	M	A	B	C2	C3	T3S2	T3S3	T3S2R4	OTROS	A	B	C	K'	D	LATITUD	LONGITUD
X. C. (Los Reyes - El Tephé) - Tianguistongo	108.60	3	1	12215	3.6	56.2	5.8	6.4	3.0	16.4	2.8	5.0	0.8	59.8	5.8	34.4	0.065	0.510	19.955409	-99.043234
X. C. (Los Reyes - El Tephé) - Tianguistongo	108.60	3	2	11750	3.5	56.5	5.6	6.2	3.2	16.0	2.7	5.3	1.0	60.0	5.6	34.4	0.072	0.510	19.955283	-99.050324
Lim. Edos. Term. Méx. Ppia. Hgo.	115.89																			
X. C. México - Pachuca	127.30	1	1	13378	2.9	57.5	5.6	5.4	3.3	15.6	3.1	5.8	0.8	60.4	5.6	34.0	0.079	0.511	19.932291	-98.902521
X. C. México - Pachuca	127.30	1	2	12786	3.0	54.6	5.9	5.7	3.6	16.9	3.5	6.0	0.8	57.6	5.9	36.5	0.069	0.511	19.932467	-98.902628
X. C. México - Pachuca	127.30	3	1	9308	3.7	48.8	5.9	4.4	4.2	19.9	4.5	7.7	0.9	52.5	5.9	41.6	0.078	0.510	19.926710	-98.878888
X. C. México - Pachuca	127.30	3	2	9694	3.4	51.1	6.0	4.1	3.7	19.3	4.1	7.4	0.9	54.5	6.0	39.5	0.076	0.510	19.926858	-98.878818
Lim. Edos. Term. Hgo. Ppia. Méx.	143.98																			
X. C. Venta de Carpio - T. C. (Pachuca - Tulancingo)	151.11	1	1	10127	4.4	55.5	4.0	4.6	4.0	16.6	3.5	6.5	0.9	59.9	4.0	36.1	0.077	0.512	19.840129	-98.708297
X. C. Venta de Carpio - T. C. (Pachuca - Tulancingo)	151.11	1	2	9658	4.5	55.0	3.7	4.2	4.8	16.3	3.7	6.9	0.9	59.5	3.7	36.8	0.072	0.512	19.839982	-98.707895
X. C. Venta de Carpio - T. C. (Pachuca - Tulancingo)	151.11	3	1	9360	5.5	51.6	6.0	5.0	3.7	17.5	3.6	6.2	0.9	57.1	6.0	36.9	0.077	0.506	19.827054	-98.691982
X. C. Venta de Carpio - T. C. (Pachuca - Tulancingo)	151.11	3	2	9150	5.2	50.1	6.4	5.1	4.0	17.8	4.0	6.5	0.9	55.3	6.4	38.3	0.077	0.506	19.829124	-98.694347
X. C. Ent. Tolman - Cd. Sahagún	162.55	1	1	9221	3.8	49.7	7.9	5.7	3.1	19.0	3.8	6.2	0.8	53.5	7.9	38.6	0.083	0.510	19.760143	-98.631574
X. C. Ent. Tolman - Cd. Sahagún	162.55	1	2	9593	3.7	50.0	8.4	5.4	3.0	18.6	3.7	6.4	0.8	53.7	8.4	37.9	0.085	0.510	19.760215	-98.631435
X. C. Ent. Tolman - Cd. Sahagún	162.55	3	1	10614	2.4	49.4	7.2	7.6	3.1	18.3	4.3	6.9	0.8	51.8	7.2	41.0	0.069	0.502	19.743409	-98.622630
X. C. Ent. Tolman - Cd. Sahagún	162.55	3	2	10696	2.0	48.9	7.4	7.7	3.4	18.4	3.8	7.6	0.8	50.9	7.4	41.7	0.087	0.502	19.743483	-98.622492
Lim. Edos. Term. Méx. Ppia. Hgo.	166.53																			
X. C. Calpulallpan - El Ocote	180.39	1	1	13451	8.2	44.9	7.0	5.4	3.6	20.1	4.3	5.6	0.9	53.1	7.0	39.9	0.075	0.534	19.642176	-98.565529
X. C. Calpulallpan - El Ocote	180.39	1	2	11728	8.0	44.0	7.0	5.6	3.9	20.7	4.5	5.5	0.8	52.0	7.0	41.0	0.068	0.534	19.642385	-98.565486
X. C. Calpulallpan - El Ocote	180.39	3	1	12619	4.6	51.5	6.7	5.9	2.6	17.0	4.1	6.6	1.0	56.1	6.7	37.2	0.085	0.508	19.605803	-98.536379
X. C. Calpulallpan - El Ocote	180.39	3	2	13029	4.3	51.6	6.4	6.1	2.8	17.2	3.8	6.9	0.9	55.9	6.4	37.7	0.071	0.508	19.605789	-98.536163
Lim. Edos. Term. Hgo. Ppia. Tlax.	180.98																			
X. C. Los Reyes - Zacatepec	196.70	1	1	10452	6.0	50.6	5.7	4.4	2.9	18.7	4.1	6.8	0.8	56.6	5.7	37.7	0.067	0.502	19.520113	-98.472795
X. C. Los Reyes - Zacatepec	196.70	1	2	11279	6.0	49.9	5.8	4.5	3.1	18.8	4.2	6.9	0.8	55.9	5.8	38.3	0.072	0.502	19.520162	-98.472717
X. C. Los Reyes - Zacatepec	196.70	3	1	9323	3.2	57.7	4.6	4.2	3.2	17.6	3.0	5.6	0.9	60.9	4.6	34.5	0.067	0.501	19.508526	-98.467085
X. C. Los Reyes - Zacatepec	196.70	3	2	8644	3.3	58.2	4.5	4.1	3.1	17.4	3.1	5.5	0.8	61.5	4.5	34.0	0.071	0.501	19.508556	-98.467002
X. C. San Martín Texmelucan - Tlaxcala - El Molinito	220.95	1	1	9981	4.2	52.2	6.6	5.8	2.8	18.1	3.6	5.8	0.9	56.4	6.6	37.0	0.067	0.522	19.316659	-98.407113
X. C. San Martín Texmelucan - Tlaxcala - El Molinito	220.95	1	2	8839	4.3	52.0	6.7	6.0	2.7	18.3	3.4	5.7	0.9	56.3	6.7	37.0	0.067	0.522	19.316638	-98.406979
X. C. San Martín Texmelucan - Tlaxcala - El Molinito	220.95	3	1	11238	3.5	64.7	6.5	4.7	2.6	11.2	2.3	3.6	0.9	68.2	6.5	25.3	0.065	0.547	19.288087	-98.410751
X. C. San Martín Texmelucan - Tlaxcala - El Molinito	220.95	3	2	10467	3.5	63.6	6.6	4.7	2.6	11.8	2.5	3.9	0.8	67.1	6.6	26.3	0.061	0.547	19.288032	-98.410642
Plaza de Cobro San Martín Texmelucan	222.00	1	1	8015	0.4	50.9	2.1	5.4	5.7	22.3	3.5	7.6	2.1	51.3	2.1	46.6	0.067	0.500	19.301809	-98.409588
Plaza de Cobro San Martín Texmelucan	222.00	1	2	8020	0.4	50.9	2.1	5.4	5.7	22.3	3.5	7.6	2.1	51.3	2.1	46.6	0.067	0.500	19.301809	-98.409588
T. C. San Martín Texmelucan - Ocotoxco (Cuota)	222.44																			
T. C. México - Puebla (Cuota)	226.73	1	1	10805	3.4	61.8	6.8	4.8	3.2	12.8	2.4	3.9	0.9	65.2	6.8	28.0	0.070	0.615	19.270097	-98.419965
T. C. México - Puebla (Cuota)	226.73	1	2	10075	3.4	61.8	6.9	4.9	3.0	12.5	2.6	4.0	0.9	65.2	6.9	27.9	0.089	0.615	19.270022	-98.419870

TLAXCALA

22 CARR: México - Puebla (Cuota)

CLAVE: 00450

RUTA: MEX-150D

AÑO: 2025

LUGAR	ESTACION				CLASIFICACION VEHICULAR EN PORCIENTO										COORDENADAS					
	KM	TE	SC	TDPA	M	A	B	C2	C3	T3S2	T3S3	T3S2R4	OTROS	A	B	C	K'	D	LATITUD	LONGITUD
México	0.00																			
Ent Concordía (T. Izq. Los Reyes) Central	17.00	3	1	80901	3.4	86.3	2.1	3.2	1.4	1.7	0.8	0.6	0.5	89.7	2.1	8.2	0.063	0.582	19.351809	-98.987693
Ent Concordía (T. Izq. Los Reyes) Lateral	17.00	3	1	28927	4.8	82.5	1.8	7.9	0.7	1.4	0.6	0.2	0.1	87.3	1.8	10.9	0.073	0.582	19.351140	-98.987199
Ent Concordía (T. Izq. Los Reyes) Central	17.00	3	2	113679	3.5	86.7	1.8	3.2	1.2	1.7	0.7	0.7	0.5	90.2	1.8	8.0	0.066	0.582	19.354153	-98.990021
Lim. Edos. Term. CDMX Ppia. Méx.	17.51																			
Av. Las Torres (Eje 6) Lateral	19.27	1	1	29591	4.6	77.7	1.9	12.3	1.1	1.4	0.6	0.3	0.1	82.3	1.9	15.8	0.071	0.587	19.348301	-98.984205
Av. Las Torres (Eje 6) Central	19.27	1	1	77487	4.2	85.9	2.2	4.1	1.1	1.7	0.5	0.1	0.2	90.1	2.2	7.7	0.067	0.587	19.348086	-98.983801
Av. Las Torres (Eje 6) Central	19.27	1	2	112260	4.2	86.0	1.6	4.4	1.0	1.9	0.4	0.2	0.3	90.2	1.6	8.2	0.059	0.587	19.350607	-98.986307
Av. Las Torres (Eje 6) Central	19.27	3	1	74471	3.5	86.1	1.8	3.9	1.4	1.3	0.9	0.6	0.5	89.6	1.8	8.6	0.066	0.583	19.339804	-98.976460
Av. Las Torres (Eje 6) Lateral	19.27	3	1	38249	5.4	77.4	2.3	10.7	1.2	1.6	0.5	0.7	0.2	82.8	2.3	14.9	0.067	0.583	19.339765	-98.976568
Av. Las Torres (Eje 6) Central	19.27	3	2	114208	3.1	86.8	1.8	4.0	1.4	1.4	0.8	0.3	0.4	89.9	1.8	8.3	0.064	0.583	19.342215	-98.977844
Eje 10 Sur (Central)	22.80	1	1	95507	2.4	90.9	1.1	3.0	0.9	0.8	0.5	0.1	0.3	93.3	1.1	5.6	0.060	0.585	19.329495	-98.965429
Eje 10 Sur (Lateral)	22.80	1	1	38043	5.0	81.2	1.7	9.7	0.8	1.0	0.2	0.3	0.1	86.2	1.7	12.1	0.081	0.585	19.329420	-98.965491
Eje 10 Sur (Central)	22.80	1	2	116808	2.4	90.9	1.1	3.0	0.9	0.8	0.5	0.1	0.3	93.3	1.1	5.6	0.074	0.585	19.331730	-98.967965
Eje 10 Sur (Lateral)	22.80	3	1	47059	5.0	81.1	2.0	9.7	0.7	0.8	0.4	0.2	0.1	86.1	2.0	11.9	0.065	0.509	19.315183	-98.948783
Eje 10 Sur (Central)	22.80	3	1	49990	2.8	84.9	2.6	5.6	1.2	2.0	0.4	0.2	0.3	87.7	2.6	9.7	0.063	0.516	19.315253	-98.948699
Eje 10 Sur (Central)	22.80	3	2	53771	2.9	84.4	2.3	5.8	1.4	2.1	0.6	0.2	0.3	87.3	2.3	10.4	0.071	0.516	19.315429	-98.948475
Eje 10 Sur (Lateral)	22.80	3	2	48924	4.8	81.6	1.8	9.9	0.6	0.7	0.3	0.2	0.1	86.4	1.8	11.8	0.064	0.509	19.315506	-98.948416
X. C. Santa Bárbara - Izúcar de Matamoros (Central)	32.14	1	1	38517	3.2	86.5	3.5	3.1	1.5	1.2	0.5	0.3	0.2	89.7	3.5	6.8	0.059	0.507	19.292268	-98.892016
X. C. Santa Bárbara - Izúcar de Matamoros (Lateral)	32.14	1	1	16254	3.2	87.2	1.2	5.1	1.0	1.3	0.5	0.3	0.2	90.4	1.2	8.4	0.072	0.503	19.292121	-98.892023
X. C. Santa Bárbara - Izúcar de Matamoros (Central)	32.14	1	2	39723	3.4	86.6	3.0	2.9	1.7	1.5	0.4	0.2	0.3	90.0	3.0	7.0	0.066	0.507	19.292434	-98.891957
X. C. Santa Bárbara - Izúcar de Matamoros (Lateral)	32.14	1	2	16477	4.9	86.0	1.3	4.8	1.0	1.1	0.5	0.2	0.2	90.9	1.3	7.8	0.077	0.503	19.292575	-98.891976
X. C. Santa Bárbara - Izúcar de Matamoros (Central)	32.14	3	1	13531	0.9	76.4	5.4	9.3	1.7	4.0	1.5	0.5	0.3	77.3	5.4	17.3	0.073	0.505	19.294764	-98.876243
X. C. Santa Bárbara - Izúcar de Matamoros (Lateral)	32.14	3	1	1441	3.2	70.4	4.6	6.2	2.2	6.8	2.3	4.1	0.2	73.6	4.6	21.8	0.074	0.523	19.294616	-98.876201
X. C. Santa Bárbara - Izúcar de Matamoros (Central)	32.14	3	2	13238	1.3	73.1	5.7	10.4	2.2	4.7	1.8	0.5	0.3	74.4	5.7	19.9	0.096	0.505	19.295001	-98.875802
X. C. Santa Bárbara - Izúcar de Matamoros (Lateral)	32.14	3	2	1581	3.2	69.9	5.8	4.9	2.5	6.5	2.2	4.7	0.3	73.1	5.8	21.1	0.086	0.523	19.295136	-98.875843
Plaza de Cobro San Marcos	33.30	2	1	16859	0.7	75.4	4.6	4.8	3.5	7.4	0.6	2.5	0.5	76.1	4.6	19.3	0.068	0.500	19.296272	-98.870712
Plaza de Cobro San Marcos	33.30	2	2	16859	0.7	75.4	4.6	4.8	3.5	7.4	0.6	2.5	0.5	76.1	4.6	19.3	0.068	0.500	19.296272	-98.870712
T. Izq. Río Frío	63.79	3	1	20863	0.9	79.5	4.7	6.0	1.8	4.4	0.7	1.7	0.3	80.4	4.7	14.9	0.079	0.505	19.350607	-98.658686
T. Izq. Río Frío	63.79	3	2	21324	1.1	78.4	5.2	6.0	2.0	4.5	0.8	1.7	0.3	79.5	5.2	15.3	0.075	0.505	19.351601	-98.660177
Lim. Edos. Term. Méx. Ppia. Pue.	65.46																			
T. Der. A San Rafael Ixtapaluca	76.80	3	1	24189	2.5	74.5	7.3	4.9	2.1	5.7	0.7	1.8	0.5	77.0	7.3	15.7	0.067	0.612	19.330436	-98.541976
T. Der. A San Rafael Ixtapaluca	76.80	3	2	25478	2.7	73.7	7.3	5.0	2.4	5.4	0.8	2.0	0.7	76.4	7.3	16.3	0.084	0.612	19.324664	-98.525181
T. Izq. Tlaxcala	90.61	1	1	22801	2.6	74.9	6.4	4.7	2.3	5.8	0.8	2.0	0.5	77.5	6.4	16.1	0.070	0.639	19.274057	-98.436337
T. Izq. Tlaxcala	90.61	1	2	23871	2.4	74.7	6.8	4.7	2.2	5.9	0.9	1.9	0.5	77.1	6.8	16.1	0.084	0.639	19.274141	-98.436221

TLAXCALA

22 CARR: México - Puebla (Cuota)

CLAVE: 00450

RUTA: MEX-150D

AÑO: 2025

LUGAR	ESTACION				CLASIFICACION VEHICULAR EN PORCIENTO										COORDENADAS					
	KM	TE	SC	TDPA	M	A	B	C2	C3	T3S2	T3S3	T3S2R4	OTROS	A	B	C	K'	D	LATITUD	LONGITUD
T. Izq. Tlaxcala	90.61	3	1	25663	1.5	74.7	5.2	7.5	1.8	6.0	1.0	2.1	0.2	76.2	5.2	18.6	0.063	0.563	19.261672	-98.417277
T. Izq. Tlaxcala	90.61	3	2	27995	1.1	72.7	5.4	7.6	2.0	6.4	1.5	3.1	0.2	73.8	5.4	20.8	0.066	0.563	19.261880	-98.417331
Plaza de Cobro San Martín Texmelucan	91.17	2	1	25585	0.9	70.3	4.2	4.7	4.2	10.2	1.1	3.6	0.8	71.2	4.2	24.6	0.068	0.500	19.241190	-98.385786
Plaza de Cobro San Martín Texmelucan	91.17	2	2	25585	0.9	70.3	4.2	4.7	4.2	10.2	1.1	3.6	0.8	71.2	4.2	24.6	0.068	0.500	19.241190	-98.385786
Lim. Edos. Term. Pue. Ppia. Tlax.	99.11																			
T. Der. Aeropuerto Internacional De Puebla	101.10	3	1	35664	1.8	79.7	4.0	4.2	2.0	5.1	1.0	1.4	0.8	81.5	4.0	14.5	0.077	0.574	19.210744	-98.351394
T. Der. Aeropuerto Internacional De Puebla	101.10	3	2	36291	1.5	77.7	4.5	5.1	2.2	5.4	1.2	1.5	0.9	79.2	4.5	16.3	0.075	0.574	19.209300	-98.349408
X. C. Xoxtla - Huactzinco	107.98	1	1	39135	1.2	78.4	3.5	6.0	1.9	5.5	1.5	1.3	0.7	79.6	3.5	16.9	0.080	0.550	19.182855	-98.317460
X. C. Xoxtla - Huactzinco	107.98	1	2	39880	1.3	77.7	3.6	6.0	2.2	5.7	1.5	1.3	0.7	79.0	3.6	17.4	0.066	0.550	19.179867	-98.313618
X. C. Xoxtla - Huactzinco	107.98	3	1	42335	4.5	77.4	2.8	6.5	1.4	4.3	0.9	1.8	0.4	81.9	2.8	15.3	0.062	0.507	19.163610	-98.296951
X. C. Xoxtla - Huactzinco	107.98	3	2	41659	4.6	75.1	3.0	7.6	1.5	4.8	1.1	1.9	0.4	79.7	3.0	17.3	0.067	0.507	19.166001	-98.298460
Lim. Edos. Term. Tlax. Ppia. Pue.	108.00																			
Anillo Periferico Poniente de Puebla (Central)	114.00	3	1	31692	2.3	79.3	3.5	5.1	2.3	4.0	0.7	2.4	0.4	81.6	3.5	14.9	0.073	0.520	19.126990	-98.263724
Anillo Periferico Poniente de Puebla (Lateral)	114.00	3	1	33693	2.5	81.5	2.6	5.2	1.9	3.8	1.2	0.9	0.4	84.0	2.6	13.4	0.073	0.520	19.128300	-98.265094
Anillo Periferico Poniente de Puebla (Central)	114.00	3	2	30294	2.1	79.4	3.4	5.2	2.4	4.0	0.7	2.4	0.4	81.5	3.4	15.1	0.075	0.520	19.127049	-98.263659
Anillo Periferico Poniente de Puebla (Lateral)	114.00	3	2	31515	2.4	81.9	2.4	5.1	1.8	4.0	1.2	0.9	0.3	84.3	2.4	13.3	0.078	0.520	19.127370	-98.263821
Boulevard Hermanos Serdán	120.46	3	1	61356	1.6	84.4	2.6	5.0	1.8	2.5	1.0	0.8	0.3	86.0	2.6	11.4	0.054	0.556	19.089363	-98.216917
Boulevard Hermanos Serdán	120.46	3	2	60678	1.7	83.3	2.8	5.1	1.8	2.8	1.2	0.8	0.5	85.0	2.8	12.2	0.068	0.556	19.089505	-98.216872
X. C. Puebla - Tlaxcala (Central)	123.00	3	1	51489	2.2	83.6	2.5	5.0	1.9	2.9	0.7	0.9	0.3	85.8	2.5	11.7	0.058	0.531	19.086076	-98.200215
X. C. Puebla - Tlaxcala (Lateral)	123.00	3	1	31449	2.3	88.3	1.7	5.3	0.9	0.7	0.3	0.3	0.2	90.6	1.7	7.7	0.072	0.531	19.085935	-98.200094
X. C. Puebla - Tlaxcala (Lateral)	123.00	3	2	29913	2.3	88.0	1.7	5.5	1.0	0.7	0.3	0.3	0.2	90.3	1.7	8.0	0.083	0.531	19.086099	-98.199241
X. C. Puebla - Tlaxcala (Central)	123.00	3	2	40515	2.0	82.6	2.5	5.0	2.0	3.8	0.9	0.9	0.3	84.6	2.5	12.9	0.079	0.531	19.085988	-98.199425
T. C. Puebla - Belem	124.90																			

23 CARR: San Martín Texmelucan - Tlaxcala - El Molinito (Cuota)

CLAVE: 00212

RUTA: MEX-117D

AÑO: 2025

LUGAR	ESTACION				CLASIFICACION VEHICULAR EN PORCIENTO										COORDENADAS					
	KM	TE	SC	TDPA	M	A	B	C2	C3	T3S2	T3S3	T3S2R4	OTROS	A	B	C	K'	D	LATITUD	LONGITUD
T. C. México - Puebla (Cuota)	0.00																			
X. C. San Martín Texmelucan - Tlaxcala	1.80	1	1	2034	3.8	81.9	4.6	3.8	2.1	2.2	0.9	0.6	0.1	85.7	4.6	9.7	0.089	0.501	19.293422	-98.414780
X. C. San Martín Texmelucan - Tlaxcala	1.80	1	2	2042	3.7	82.2	4.5	3.8	2.0	2.1	1.0	0.6	0.1	85.9	4.5	9.6	0.104	0.501	19.293503	-98.414828
Lim. Edos. Term. Pue. Ppia. Tlax.	4.05																			
Plaza de Cobro San Martín Texmelucan	5.45	2	1	3040	1.2	78.3	5.0	5.2	2.7	4.1	1.0	1.4	1.1	79.5	5.0	15.5	0.088	0.500	19.301602	-98.404063
Plaza de Cobro San Martín Texmelucan	5.45	2	2	3040	1.2	78.3	5.0	5.2	2.7	4.1	1.0	1.4	1.1	79.5	5.0	15.5	0.088	0.500	19.301602	-98.404063
X. C. San Martín Texmelucan - Tlaxcala (Trébol)	24.75	1	1	20818	3.8	88.9	1.4	2.7	0.9	1.3	0.3	0.6	0.1	92.7	1.4	5.9	0.107	0.585	19.325734	-98.249656

TLAXCALA

23 CARR: San Martín Texmelucan - Tlaxcala - El Molinito (Cuota)

CLAVE: 00212

RUTA: MEX-117D

AÑO: 2025

LUGAR	ESTACION				CLASIFICACION VEHICULAR EN PORCIENTO										COORDENADAS					
	KM	TE	SC	TDPA	M	A	B	C2	C3	T3S2	T3S3	T3S2R4	OTROS	A	B	C	K'	D	LATITUD	LONGITUD
X. C. San Martín Texmelucan - Tlaxcala (Trébol)	24.75	1	2	21214	3.4	88.8	1.5	2.9	0.9	1.4	0.4	0.6	0.1	92.2	1.5	6.3	0.090	0.585	19.325899	-98.249649
X. C. San Martín Texmelucan - Tlaxcala (Trébol)	24.75	3	1	19097	2.9	89.2	1.8	2.8	0.7	1.4	0.4	0.6	0.2	92.1	1.8	6.1	0.100	0.533	19.331526	-98.239857
X. C. San Martín Texmelucan - Tlaxcala (Trébol)	24.75	3	2	20732	2.7	89.1	1.9	3.3	0.8	1.1	0.3	0.6	0.2	91.8	1.9	6.3	0.085	0.533	19.331495	-98.240091
T. Izq. Tizatlán	29.00	3	1	19140	4.6	87.8	1.9	3.6	0.6	0.8	0.2	0.4	0.1	92.4	1.9	5.7	0.086	0.522	19.337592	-98.213895
T. Izq. Tizatlán	29.00	3	2	18068	4.6	87.7	1.8	3.8	0.6	0.8	0.2	0.4	0.1	92.3	1.8	5.9	0.087	0.522	19.337655	-98.214329
T. Der. San Pablo Apetatitlán	31.65	3	1	37556	3.6	87.9	1.6	3.7	0.9	1.1	0.5	0.5	0.2	91.5	1.6	6.9	0.072	0.500	19.347748	-98.194072
T. Der. San Pablo Apetatitlán	31.65	3	2	34065	3.6	87.6	1.4	3.8	1.0	1.3	0.5	0.6	0.2	91.2	1.4	7.4	0.082	0.500	19.347904	-98.194171
Ocotoxco	35.20	1	1	33964	2.9	88.5	1.7	3.7	0.7	1.2	0.7	0.4	0.2	91.4	1.7	6.9	0.090	0.555	19.379822	-98.179042
Ocotoxco	35.20	1	2	33668	3.1	88.4	1.6	3.5	0.8	1.4	0.6	0.4	0.2	91.5	1.6	6.9	0.080	0.555	19.379611	-98.179268

24 CARR: Ramal a Altzayanca de Hidalgo

CLAVE: 29562

RUTA: TLAX

AÑO: 2025

LUGAR	ESTACION				CLASIFICACION VEHICULAR EN PORCIENTO										COORDENADAS					
	KM	TE	SC	TDPA	M	A	B	C2	C3	T3S2	T3S3	T3S2R4	OTROS	A	B	C	K'	D	LATITUD	LONGITUD
T. C. Los Reyes - Zacatepec	0.00	3	0	4132	5.7	87.4	0.8	5.1	0.6	0.3	0.1	0.0	0.0	93.1	0.8	6.1	0.076	0.518	19.319771	-97.845897
Xicoténcatl	6.50	3	0	3260	10.6	82.7	0.9	4.8	0.6	0.2	0.1	0.1	0.0	93.3	0.9	5.8	0.077	0.562	19.357033	-97.831938
Altzayanca de Hidalgo	15.00	1	0	3156	7.1	87.6	0.3	4.6	0.3	0.1	0.0	0.0	0.0	94.7	0.3	5.0	0.073	0.571	19.422732	-97.804390

25 CARR: Ramal a San Pedro Ecatepec

CLAVE: 29561

RUTA: TLAX

AÑO: 2025

LUGAR	ESTACION				CLASIFICACION VEHICULAR EN PORCIENTO										COORDENADAS					
	KM	TE	SC	TDPA	M	A	B	C2	C3	T3S2	T3S3	T3S2R4	OTROS	A	B	C	K'	D	LATITUD	LONGITUD
T. C. Apizaco - Tejocotal	0.00	3	0	2025	6.0	84.9	1.6	5.6	0.9	0.7	0.2	0.1	0.0	90.9	1.6	7.5	0.110	0.561	19.514525	-98.119636
San Pedro Ecatepec	4.60	1	0	2224	6.2	84.8	1.7	5.5	0.9	0.6	0.2	0.1	0.0	91.0	1.7	7.3	0.096	0.519	19.518887	-98.153595

26 CARR: Ramal a Xalostoc

CLAVE: 29563

RUTA: TLAX

AÑO: 2025

LUGAR	ESTACION				CLASIFICACION VEHICULAR EN PORCIENTO										COORDENADAS					
	KM	TE	SC	TDPA	M	A	B	C2	C3	T3S2	T3S3	T3S2R4	OTROS	A	B	C	K'	D	LATITUD	LONGITUD
T. C. Los Reyes - Zacatepec	0.00	3	0	11237	6.1	90.8	0.3	2.1	0.4	0.2	0.0	0.1	0.0	96.9	0.3	2.8	0.087	0.573	19.396016	-98.057133
Xalostoc	2.50	1	0	11500	6.4	89.6	0.4	2.4	0.7	0.4	0.0	0.1	0.0	96.0	0.4	3.6	0.080	0.519	19.400464	-98.051575

TLAXCALA

27 CARR: Xalostoc - Terrenate

CLAVE: 29390

RUTA: TLAX

AÑO: 2025

LUGAR	ESTACION				CLASIFICACION VEHICULAR EN PORCIENTO													COORDENADAS		
	KM	TE	SC	TDPA	M	A	B	C2	C3	T3S2	T3S3	T3S2R4	OTROS	A	B	C	K'	D	LATITUD	LONGITUD
Xalostoc	0.00	3	0	4654	5.1	89.4	0.7	3.8	0.6	0.2	0.1	0.1	0.0	94.5	0.7	4.8	0.091	0.555	19.431229	-98.014325
San Francisco Teometitla	7.10	3	0	2292	4.7	92.1	0.4	2.0	0.5	0.2	0.1	0.0	0.0	96.8	0.4	2.8	0.110	0.524	19.458832	-97.978832
T. C. Huamantla - Terrenate	17.50	1	0	2247	6.6	88.0	0.7	4.0	0.3	0.2	0.1	0.0	0.1	94.6	0.7	4.7	0.084	0.566	19.467333	-97.931172

28 CARR: Puebla - Tlaxcala (Cuota)

CLAVE:

RUTA: PUE-D

AÑO: 2025

LUGAR	ESTACION				CLASIFICACION VEHICULAR EN PORCIENTO													COORDENADAS		
	KM	TE	SC	TDPA	M	A	B	C2	C3	T3S2	T3S3	T3S2R4	OTROS	A	B	C	K'	D	LATITUD	LONGITUD
Anillo Periferico Poniente de Puebla	0.00	3	0	13918	3.7	86.6	1.9	3.4	1.0	1.9	0.5	0.8	0.2	90.3	1.9	7.8	0.083	0.564	19.150578	-98.269377
Lim. Edos. Term. Pue. Ppia. Tlax	2.40																			
T Der. Zacatelco	8.00	1	0	12940	1.3	90.0	1.7	2.9	0.9	1.6	0.5	0.8	0.3	91.3	1.7	7.0	0.083	0.554	19.201456	-98.261745
T Der. Zacatelco	8.00	3	0	11810	1.7	89.3	1.5	3.1	0.8	1.6	0.7	1.0	0.3	91.0	1.5	7.5	0.087	0.534	19.216466	-98.268047
Lib. de Tlaxcala (Cuota)	17.80	1	0	12665	1.6	89.2	1.9	2.9	1.0	1.6	0.6	1.0	0.2	90.8	1.9	7.3	0.083	0.658	19.278500	-98.249919

29 CARR: Tlaxco - Tejocotal (Cuota)

CLAVE: 00209

RUTA: PUE-TLAX-HGO-D

AÑO: 2025

LUGAR	ESTACION				CLASIFICACION VEHICULAR EN PORCIENTO													COORDENADAS		
	KM	TE	SC	TDPA	M	A	B	C2	C3	T3S2	T3S3	T3S2R4	OTROS	A	B	C	K'	D	LATITUD	LONGITUD
T.C. Apan - Tlaxco	23.00	3	0	5750	1.8	85.9	3.3	3.4	1.7	2.1	1.0	0.7	0.1	87.7	3.3	9.0	0.105	0.718	19.607087	-98.156663
Lim. Edos. Term. Tlax. Ppia. Pue.	30.70																			
Ent. Chignahuapan	56.20	3	0	3948	2.2	85.0	2.6	3.6	2.2	2.1	1.2	1.1	0.0	87.2	2.6	10.2	0.096	0.524	19.870773	-98.061055
Lim. Edos. Term. Pue. Ppia. Hgo.	84.80																			
T. C. Apizaco - Tejocotal	85.60																			

30 CARR: Acocotla - Vicente Guerrero

CLAVE: 29560

RUTA: MEX-TLAX

AÑO: 2025

LUGAR	ESTACION				CLASIFICACION VEHICULAR EN PORCIENTO													COORDENADAS		
	KM	TE	SC	TDPA	M	A	B	C2	C3	T3S2	T3S3	T3S2R4	OTROS	A	B	C	K'	D	LATITUD	LONGITUD
T. C. Los Reyes - Zacatepec	0.00	3	0	2391	3.9	86.6	1.9	3.0	1.2	1.5	1.0	0.9	0.0	90.5	1.9	7.6	0.080	0.635	19.369966	-98.029719
Vicente Guerrero	35.60	1	0	4012	9.1	75.1	1.8	13.3	0.2	0.2	0.1	0.1	0.1	84.2	1.8	14.0	0.082	0.552	19.135875	-98.144525

TLAXCALA

31 CARR: Apizaco - Emiliano Zapata

CLAVE: 29033

RUTA: TLAX-MEX-136

AÑO: 2025

LUGAR	ESTACION				CLASIFICACION VEHICULAR EN PORCIENTO										COORDENADAS					
	KM	TE	SC	TDPA	M	A	B	C2	C3	T3S2	T3S3	T3S2R4	OTROS	A	B	C	K'	D	LATITUD	LONGITUD
Apizaco	0.00	3	0	12417	8.5	80.2	0.9	5.3	0.7	2.8	0.7	0.3	0.6	88.7	0.9	10.4	0.091	0.516	19.417225	-98.129975
Capula	16.00	1	0	3938	5.2	90.7	0.7	2.6	0.5	0.2	0.1	0.0	0.0	95.9	0.7	3.4	0.079	0.500	19.530812	-98.040768
Emiliano Zapata	37.00	1	0	1711	8.5	88.9	0.4	1.6	0.4	0.1	0.1	0.0	0.0	97.4	0.4	2.2	0.107	0.557	19.551679	-97.917183

32 CARR: Calpulalpan - El Ocote

CLAVE: 00054

RUTA: MEX-HGO

AÑO: 2025

LUGAR	ESTACION				CLASIFICACION VEHICULAR EN PORCIENTO										COORDENADAS					
	KM	TE	SC	TDPA	M	A	B	C2	C3	T3S2	T3S3	T3S2R4	OTROS	A	B	C	K'	D	LATITUD	LONGITUD
Calpulalpan	0.00	3	0	8305	3.7	77.7	3.0	7.6	1.8	4.0	1.2	0.8	0.2	81.4	3.0	15.6	0.095	0.523	19.611292	-98.557724
X. C. Arco Norte de La Ciudad de México	4.00	3	1	4097	4.1	79.8	2.1	4.8	1.8	4.4	1.4	1.2	0.4	83.9	2.1	14.0	0.082	0.504	19.626331	-98.542524
X. C. Arco Norte de La Ciudad de México	4.00	3	2	4033	3.8	79.2	1.8	5.1	2.1	4.5	1.7	1.4	0.4	83.0	1.8	15.2	0.084	0.504	19.626396	-98.542612
Lim. Edos. Term. Tlax. Ppia. Hgo.	5.00																			
Apan	19.58	3	1	4308	5.9	85.1	1.1	6.2	1.0	0.4	0.1	0.2	0.0	91.0	1.1	7.9	0.079	0.508	19.728898	-98.471409
Apan	19.58	3	2	4181	6.1	85.0	1.2	6.0	1.1	0.4	0.1	0.1	0.0	91.1	1.2	7.7	0.083	0.508	19.728899	-98.471410
Tepeapulco	34.92	3	0	5047	3.4	89.8	0.6	2.8	1.7	1.2	0.3	0.2	0.0	93.2	0.6	6.2	0.090	0.501	19.802932	-98.563276
X. C. Venta de Carpio - Tulancingo	51.18	1	1	1452	3.1	88.7	0.5	4.1	2.5	0.7	0.3	0.1	0.0	91.8	0.5	7.7	0.086	0.525	19.919207	-98.577627
X. C. Venta de Carpio - Tulancingo	51.18	1	2	1316	3.0	88.3	0.5	4.4	2.6	0.8	0.3	0.1	0.0	91.3	0.5	8.2	0.088	0.525	19.918474	-98.576645
X. C. Venta de Carpio - Tulancingo	51.18	3	0	2375	5.1	87.0	1.0	3.2	1.3	2.2	0.1	0.1	0.0	92.1	1.0	6.9	0.091	0.516	19.932095	-98.585122
El Ocote	70.44	1	1	2107	2.7	94.9	0.2	1.6	0.4	0.2	0.0	0.0	0.0	97.6	0.2	2.2	0.092	0.501	20.040317	-98.621950
El Ocote	70.44	1	2	2095	2.6	94.9	0.2	1.7	0.4	0.2	0.0	0.0	0.0	97.5	0.2	2.3	0.094	0.501	20.041334	-98.621394

33 CARR: Calpulalpan - Nanacamilpa

CLAVE: 29034

RUTA: TLAX-MEX-136

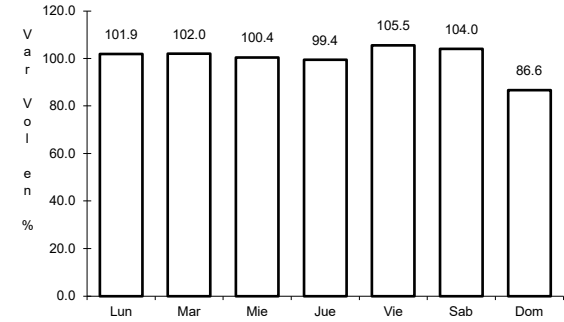
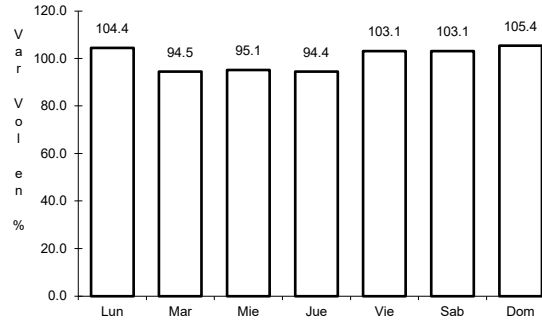
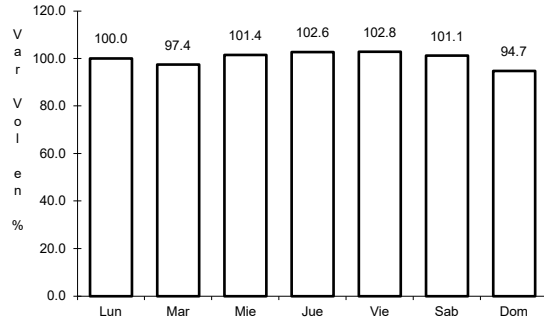
AÑO: 2025

LUGAR	ESTACION				CLASIFICACION VEHICULAR EN PORCIENTO										COORDENADAS					
	KM	TE	SC	TDPA	M	A	B	C2	C3	T3S2	T3S3	T3S2R4	OTROS	A	B	C	K'	D	LATITUD	LONGITUD
Calpulalpan	0.00	3	0	2663	10.1	86.8	0.2	2.3	0.4	0.1	0.0	0.1	0.0	96.9	0.2	2.9	0.084	0.504	19.560676	-98.571316
Mazapa	7.00																			
Nanacamilpa	15.50	1	0	1833	16.5	81.5	0.2	1.4	0.2	0.1	0.1	0.0	0.0	98.0	0.2	1.8	0.165	0.560	19.503263	-98.532959

1 CARR: Amozoc - Teziutlán

CLAVE: 00210

ruta: MEX-129



Km: 1.40

Tipo: 3

Sent: 0

Km: 76.35

Tipo: 3

Sent: 0

Km: 157.80

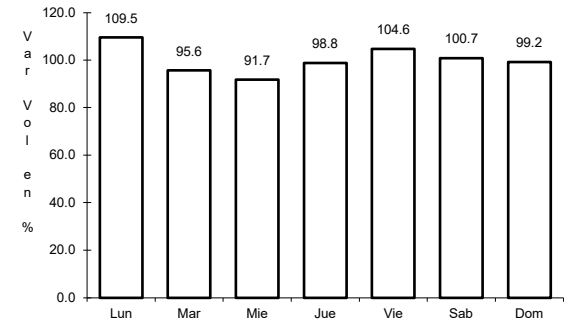
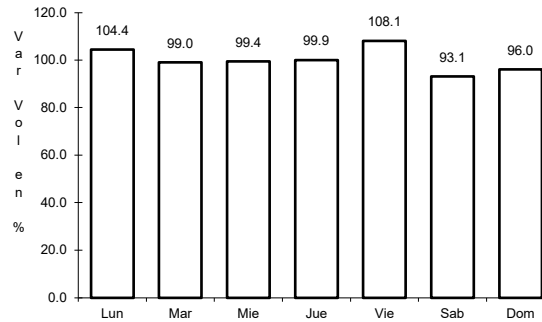
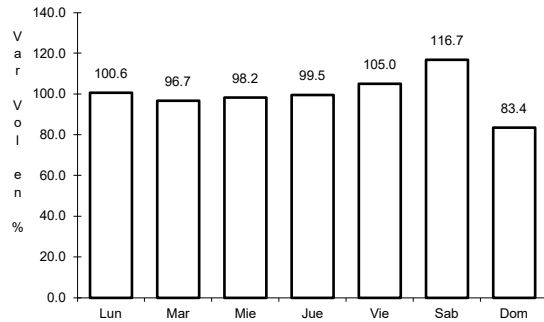
Tipo: 1

Sent: 0

2 CARR: Apizaco - Tejocotal

CLAVE: 00430

ruta: MEX-119



Km: 0.00

Tipo: 3

Sent: 1

Km: 0.00

Tipo: 3

Sent: 2

Km: 113.15

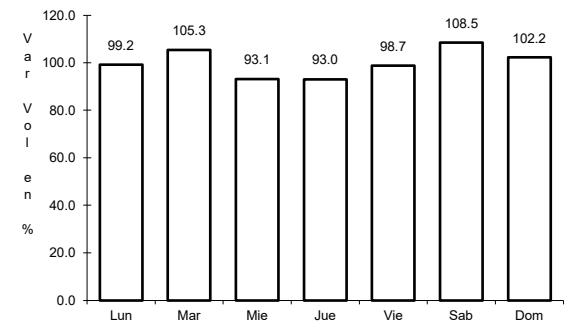
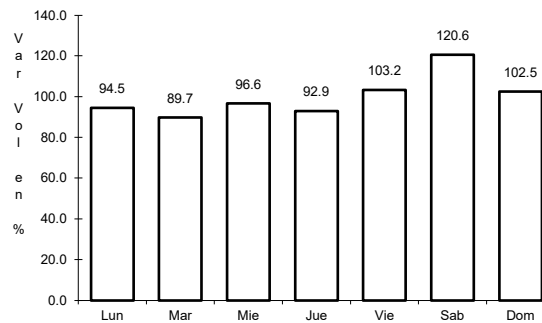
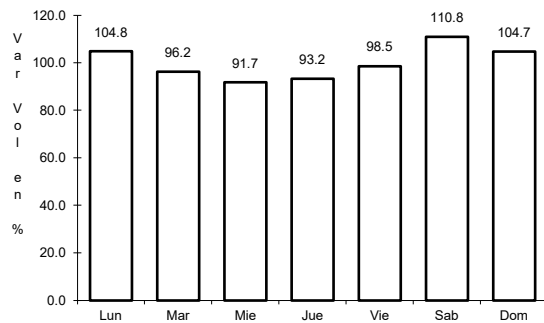
Tipo: 1

Sent: 0

3 CARR: Huamantla - La Venta

CLAVE: 29564

ruta: MEX-136



Km: 0.00

Tipo: 3

Sent: 1

Km: 0.00

Tipo: 3

Sent: 2

Km: 17.60

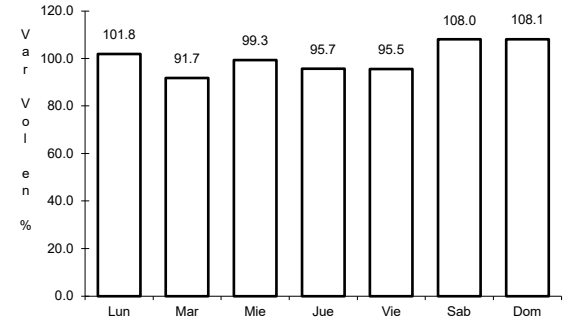
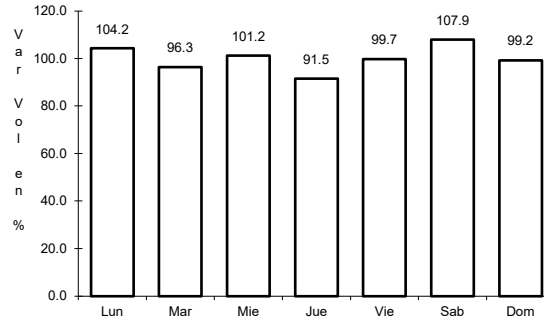
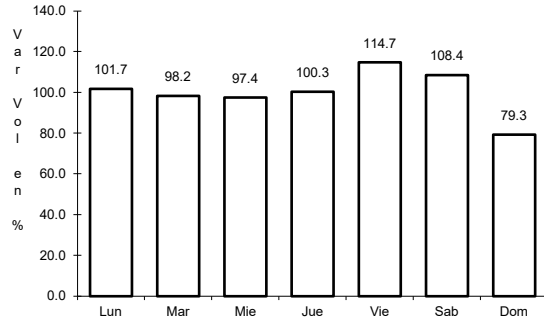
Tipo: 1

Sent: 0

4 CARR: Huamantla - Terrenate

CLAVE: 29036

RUTA: MEX-136



Km: 0.00                      Tipo: 3                      Sent: 0

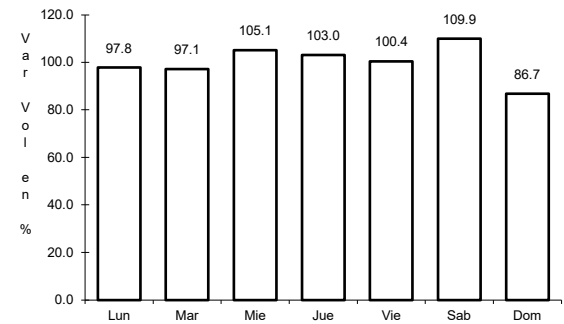
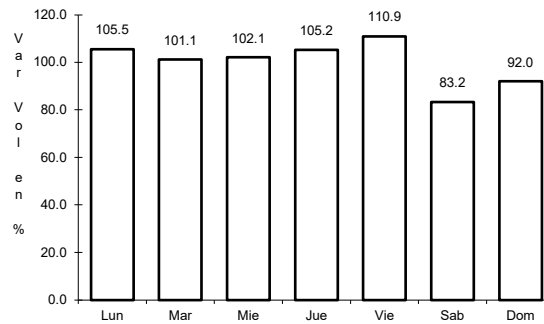
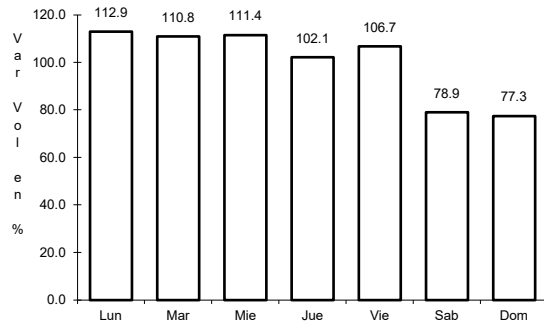
Km: 12.50                      Tipo: 1                      Sent: 0

Km: 21.00                      Tipo: 1                      Sent: 0

5 CARR: Libramiento de Apizaco

CLAVE: 29567

RUTA: MEX-136



Km: 6.00                      Tipo: 1                      Sent: 1

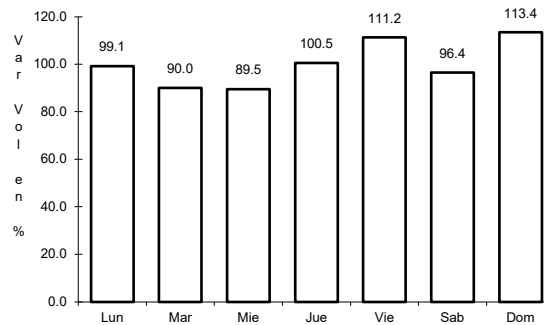
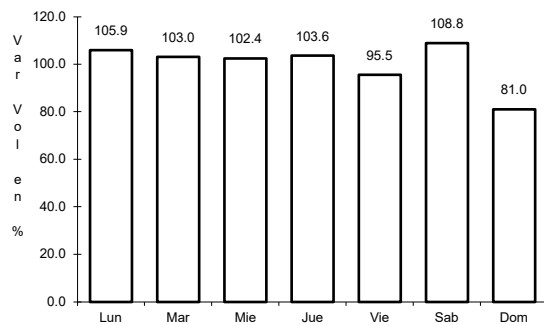
Km: 6.00                      Tipo: 1                      Sent: 2

Km: 6.00                      Tipo: 3                      Sent: 1

6 CARR: Libramiento de Santiago Tlalpan

CLAVE:

RUTA: MEX-136



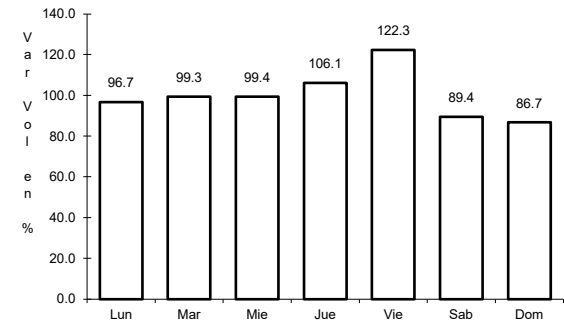
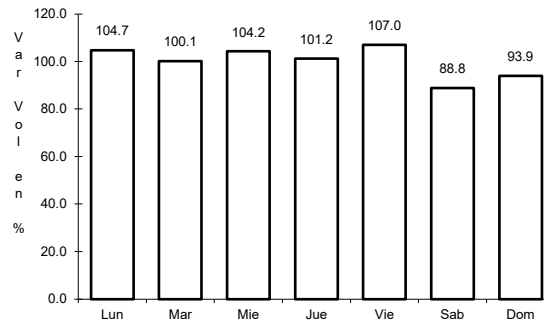
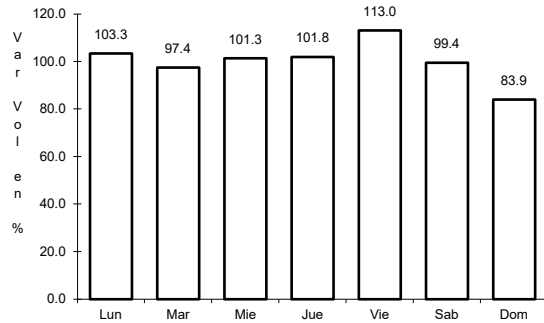
Km: 0.00                      Tipo: 3                      Sent: 1

Km: 0.00                      Tipo: 3                      Sent: 2

7 CARR: Libramiento Huamantla

CLAVE: 29567

ruta: MEX-136



Km: 0.00 Tipo: 3 Sent: 1

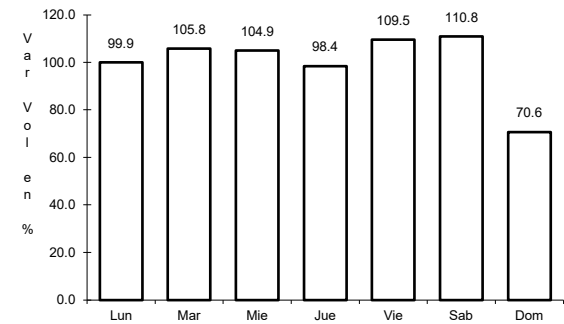
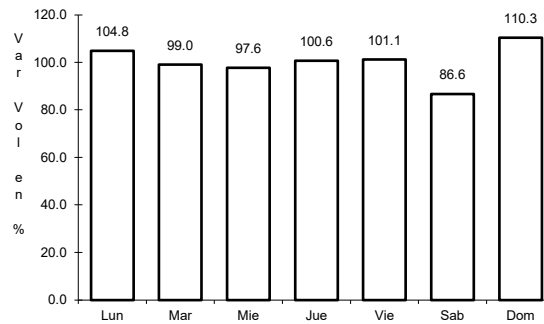
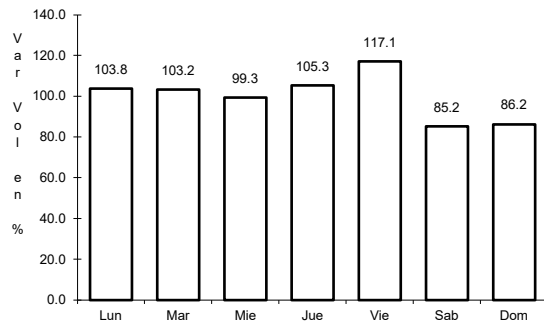
Km: 0.00 Tipo: 3 Sent: 2

Km: 4.60 Tipo: 1 Sent: 1

8 CARR: Libramiento Hueyotlipan

CLAVE: 29567

ruta: MEX-136



Km: 0.00 Tipo: 3 Sent: 1

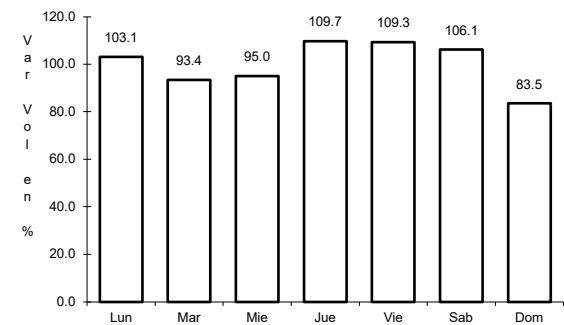
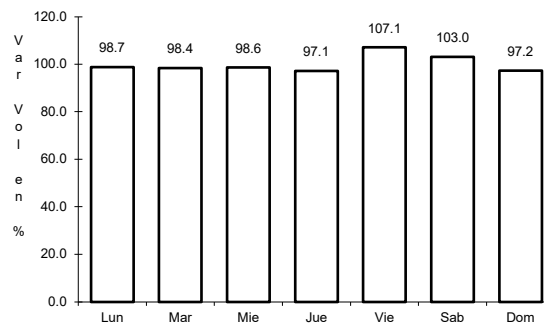
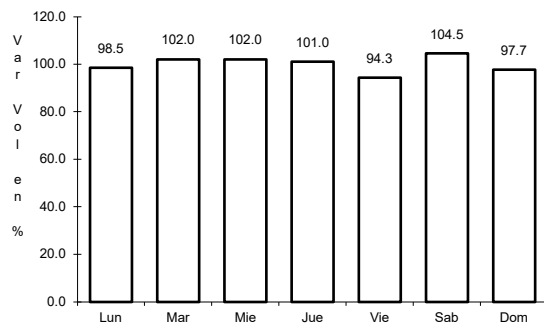
Km: 0.00 Tipo: 3 Sent: 2

Km: 2.70 Tipo: 1 Sent: 1

9 CARR: Los Reyes - Zacatepec

CLAVE: 00052

ruta: MEX-136



Km: 3.35 Tipo: 3 Sent: 1

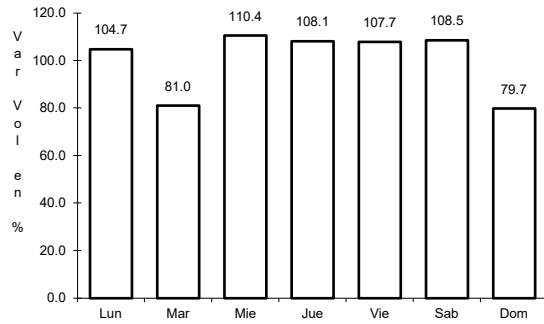
Km: 3.35 Tipo: 3 Sent: 2

Km: 187.67 Tipo: 1 Sent: 0

10 CARR: Los Tréboles - Tlaxcala

CLAVE:

ruta: MEX-117



Km: 0.00

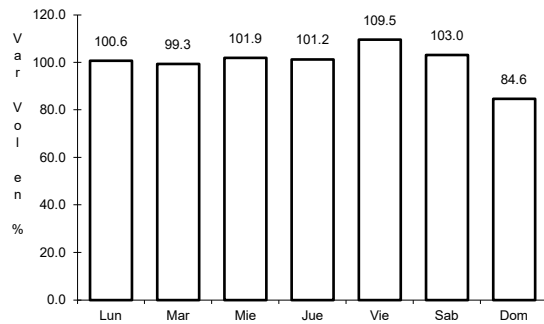
Tipo: 3

Sent: 0

11 CARR: Puebla - Belem

CLAVE: 00055

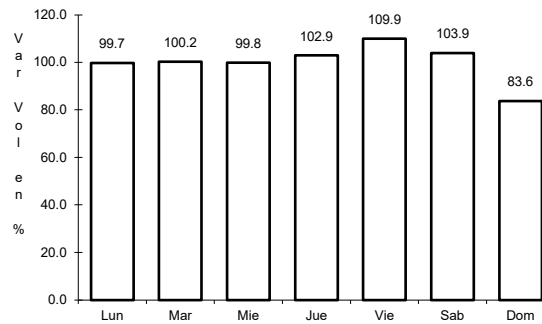
ruta: MEX-121



Km: 4.00

Tipo: 3

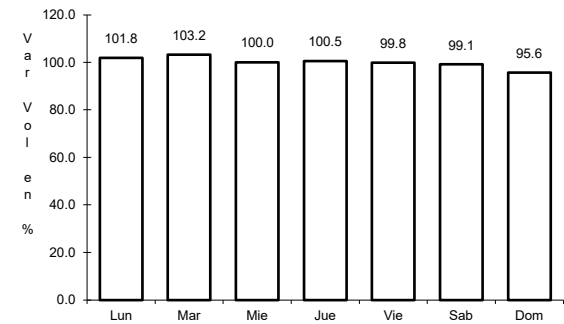
Sent: 1



Km: 4.00

Tipo: 3

Sent: 2



Km: 28.80

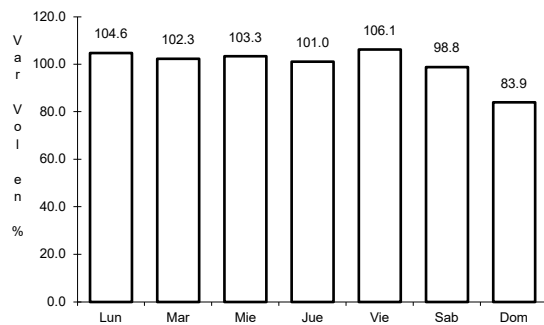
Tipo: 1

Sent: 1

12 CARR: Puebla - Tlaxcala

CLAVE: 00475

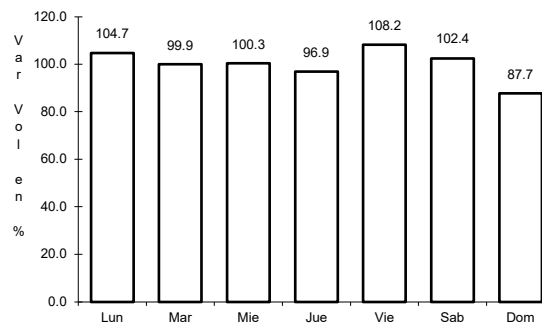
ruta: MEX-119



Km: 5.41

Tipo: 3

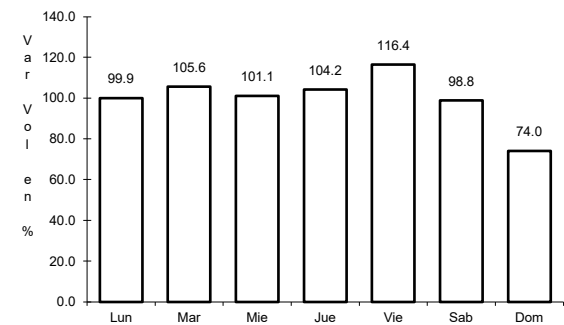
Sent: 1



Km: 5.41

Tipo: 3

Sent: 2



Km: 33.22

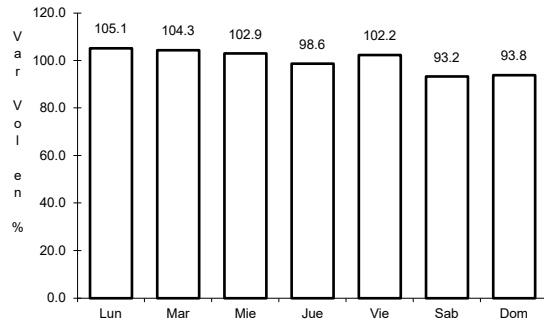
Tipo: 1

Sent: 1

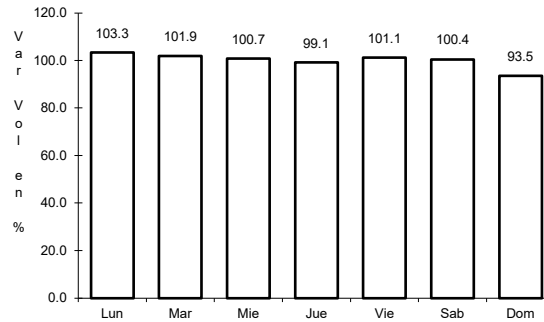
13 CARR: Ramal a San Felipe de Hidalgo

CLAVE: 29565

ruta: MEX-136



Km: 0.00                      Tipo: 3                      Sent: 0

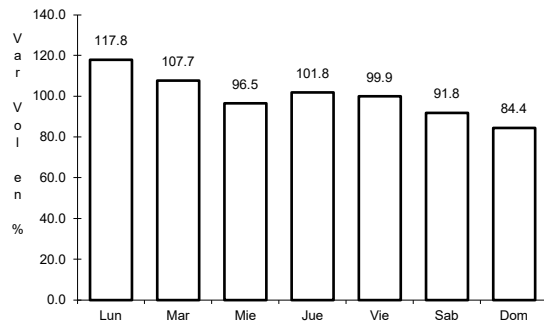


Km: 10.50                      Tipo: 1                      Sent: 0

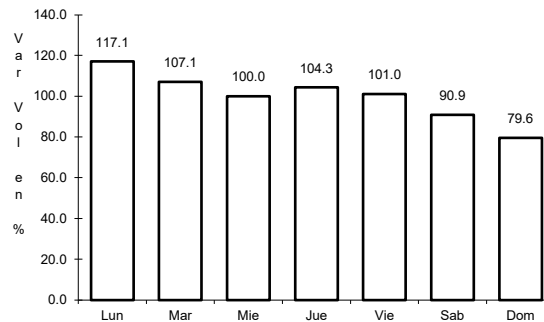
14 CARR: San Martín Texmelucan - Tlaxcala

CLAVE: 00158

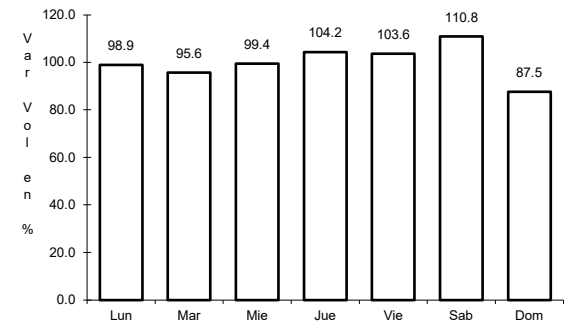
ruta: MEX-117



Km: 0.00                      Tipo: 3                      Sent: 1



Km: 0.00                      Tipo: 3                      Sent: 2

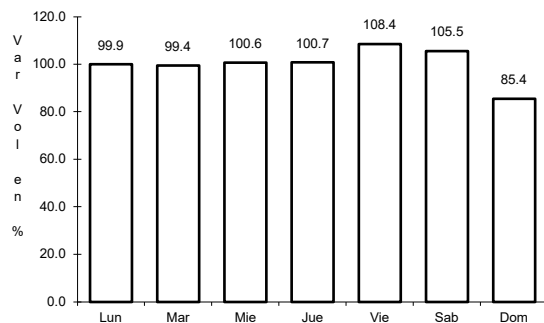


Km: 24.81                      Tipo: 1                      Sent: 0

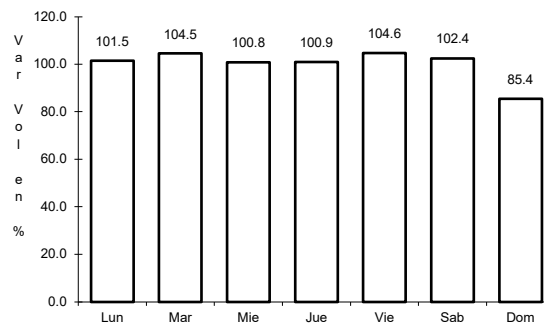
15 CARR: San Pablo Apetatitlán - Apizaco

CLAVE: 29035

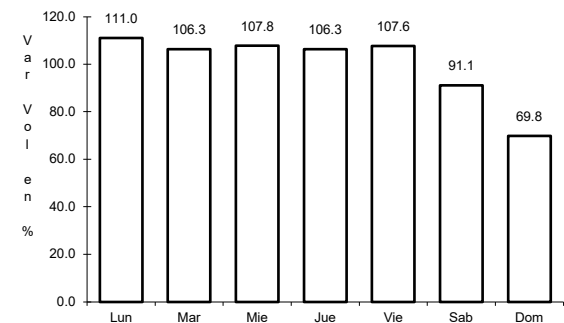
ruta: MEX-119



Km: 0.00                      Tipo: 3                      Sent: 0



Km: 5.00                      Tipo: 1                      Sent: 0

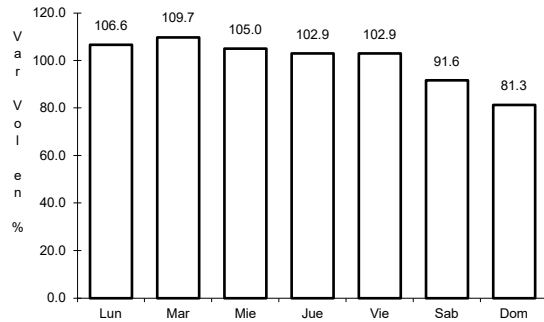


Km: 20.00                      Tipo: 1                      Sent: 0

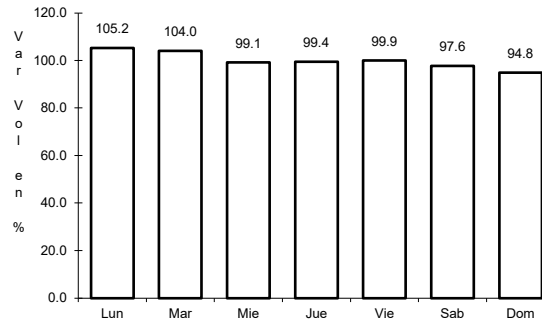
16 CARR: T. C. (Puebla - Tlaxcala) - Villa Alta

CLAVE: 29566

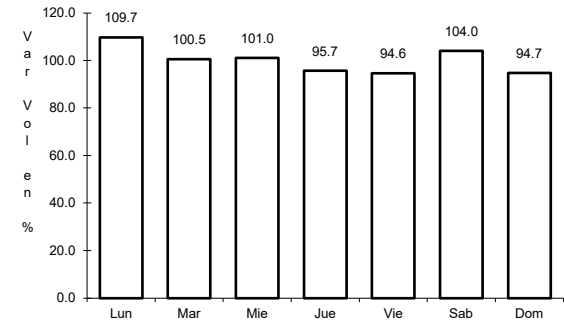
ruta: MEX-119



Km: 0.00      Tipo: 3      Sent: 0



Km: 9.30      Tipo: 1      Sent: 0

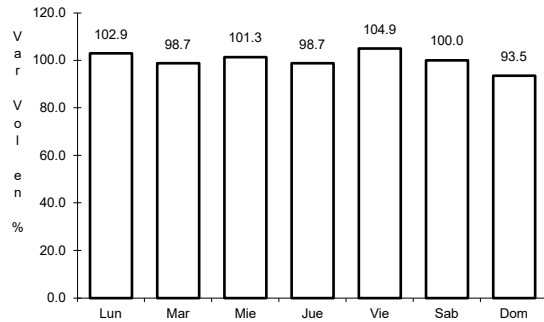


Km: 23.50      Tipo: 1      Sent: 0

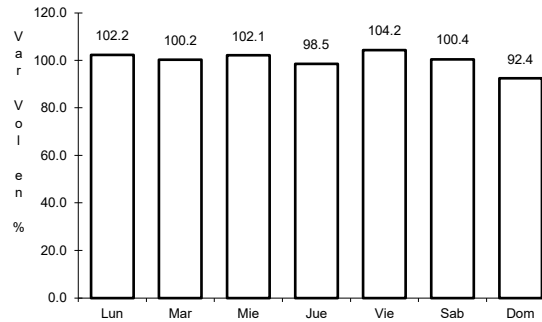
17 CARR: Tetlatlahuca - Santa Ana Chiautempan

CLAVE: 00158

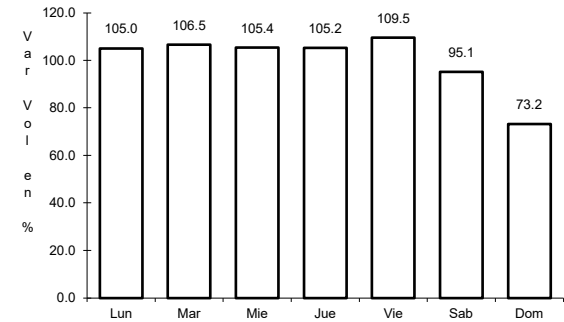
ruta: MEX-119



Km: 2.39      Tipo: 1      Sent: 0



Km: 5.50      Tipo: 1      Sent: 0

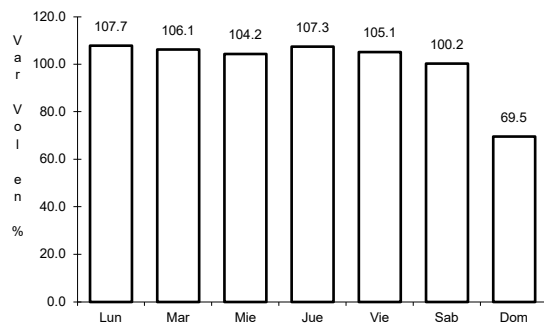


Km: 9.94      Tipo: 1      Sent: 0

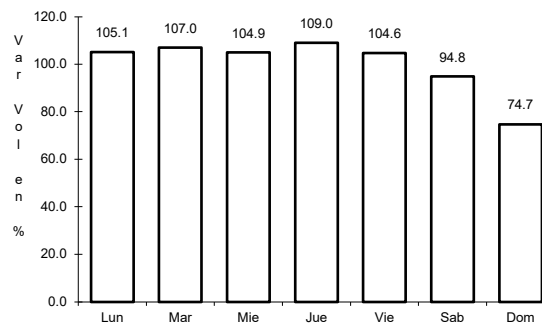
18 CARR: Tlaxcala - Belem

CLAVE: 29389

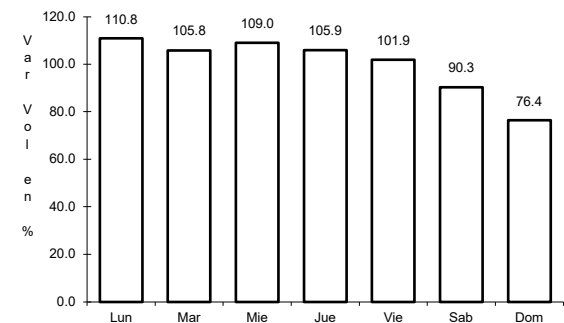
ruta: MEX-119



Km: 3.91      Tipo: 1      Sent: 1



Km: 3.91      Tipo: 1      Sent: 2

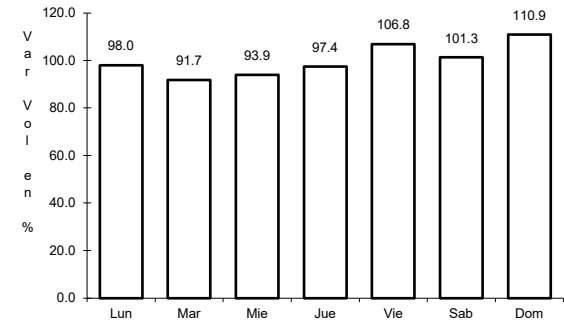
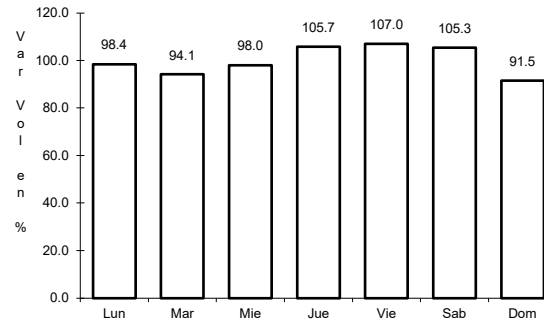
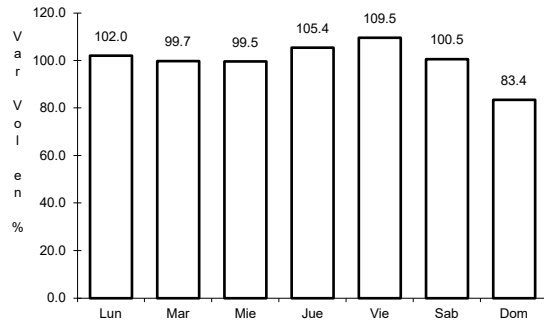


Km: 10.06      Tipo: 1      Sent: 0

19 CARR: Amozoc - Perote (Cuota)

CLAVE: 00030

ruta: MEX-140D



Km: 0.00      Tipo: 3      Sent: 0

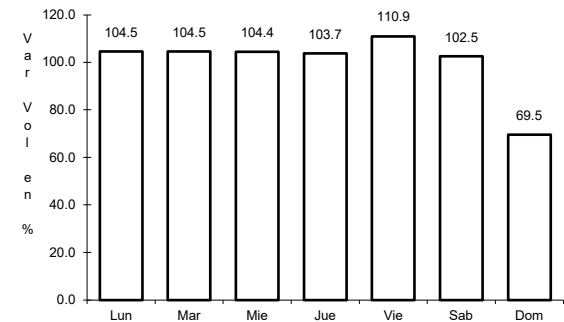
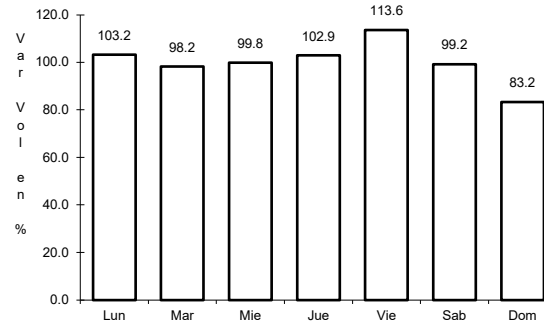
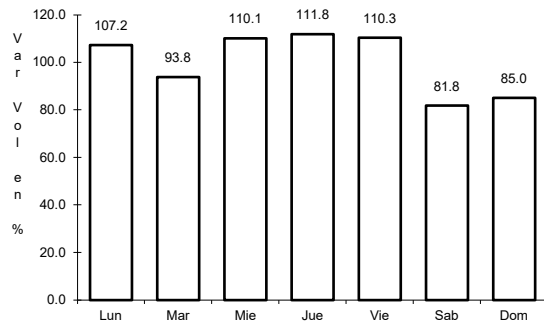
Km: 25.80      Tipo: 3      Sent: 0

Km: 62.70      Tipo: 3      Sent: 0

20 CARR: Libramiento de Tlaxcala (Cuota)

CLAVE:

ruta: MEX-117D



Km: 0.00      Tipo: 3      Sent: 1

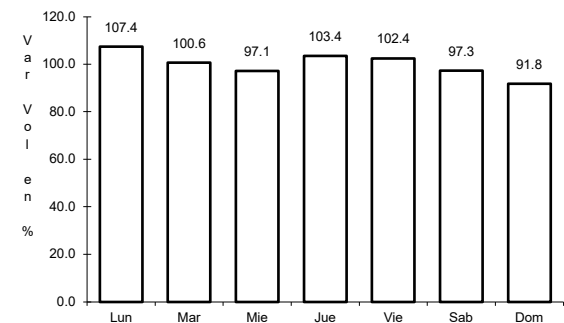
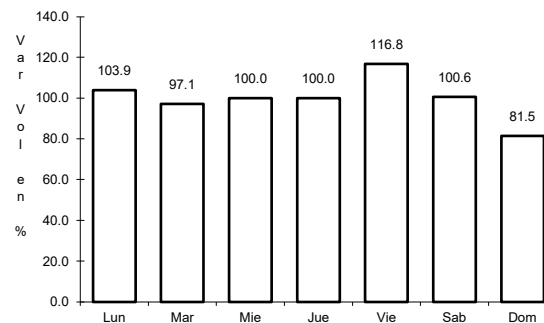
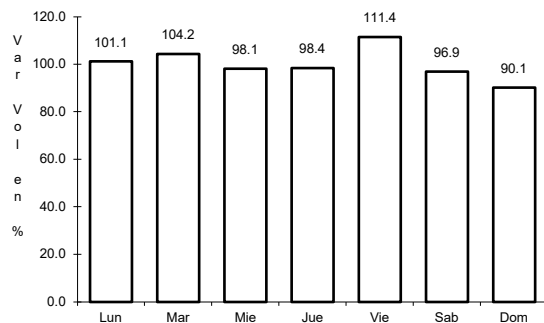
Km: 0.00      Tipo: 3      Sent: 2

Km: 11.00      Tipo: 1      Sent: 1

21 CARR: Libramiento Norte de la Ciudad de México (Cuota)

CLAVE: 0902

ruta: MEX-055D



Km: 12.90      Tipo: 1      Sent: 1

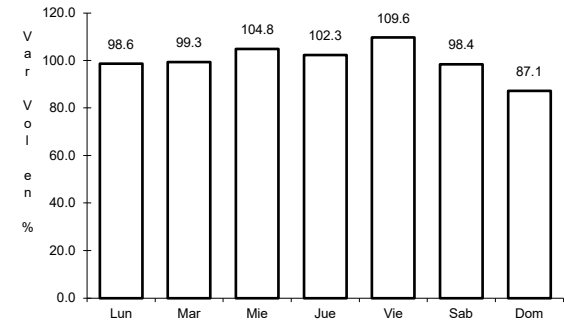
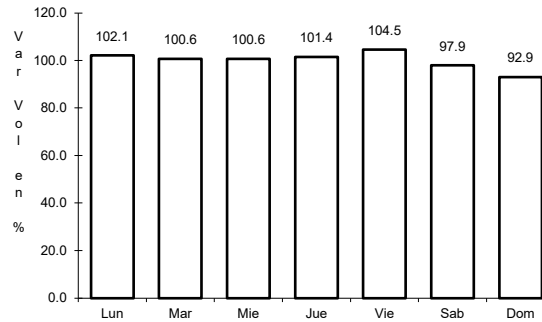
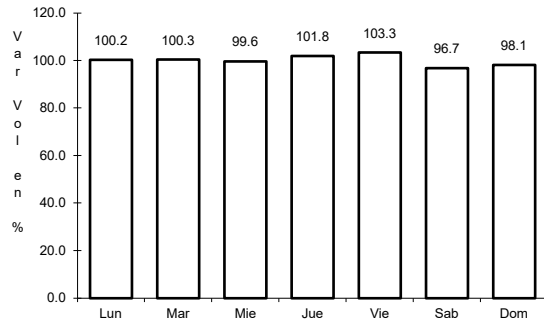
Km: 12.90      Tipo: 1      Sent: 2

Km: 226.73      Tipo: 1      Sent: 1

22 CARR: México - Puebla (Cuota)

CLAVE: 00450

ruta: MEX-150D



Km: 17.00

Tipo: 3

Sent: 1

Km: 17.00

Tipo: 3

Sent: 2

Km: 120.46

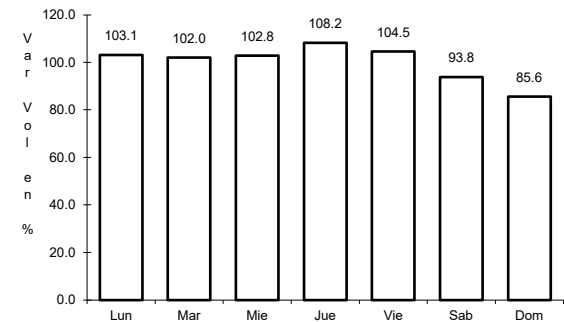
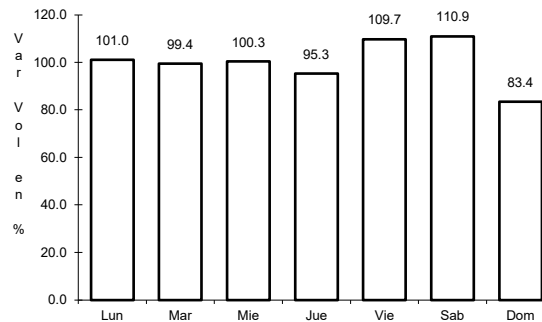
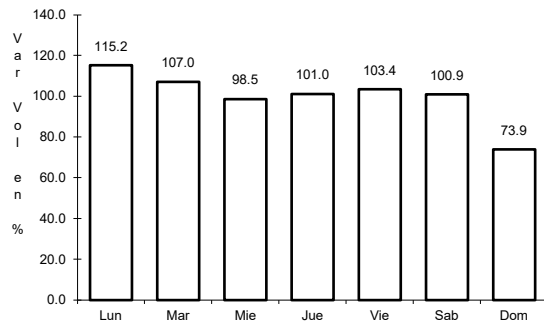
Tipo: 3

Sent: 1

23 CARR: San Martin Texmelucan - Tlaxcala - El Molinito (Cuota)

CLAVE: 00212

ruta: MEX-117D



Km: 1.80

Tipo: 1

Sent: 1

Km: 35.20

Tipo: 1

Sent: 1

Km: 35.20

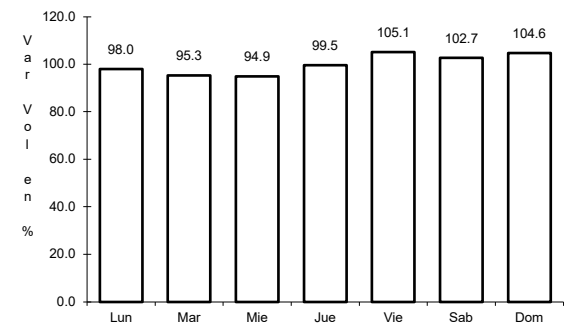
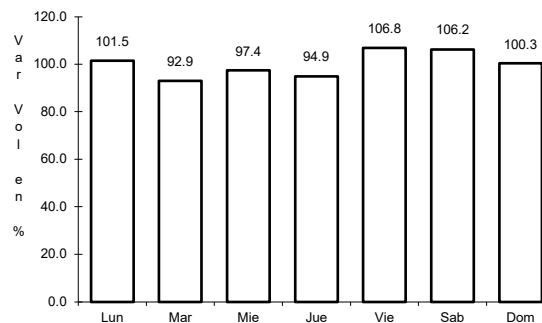
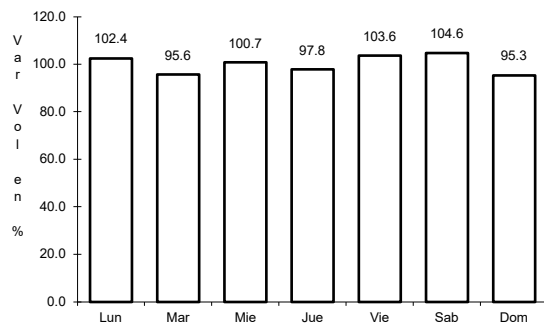
Tipo: 1

Sent: 2

24 CARR: Ramal a Altzayanca de Hidalgo

CLAVE: 29562

ruta: TLAX



Km: 0.00

Tipo: 3

Sent: 0

Km: 6.50

Tipo: 3

Sent: 0

Km: 15.00

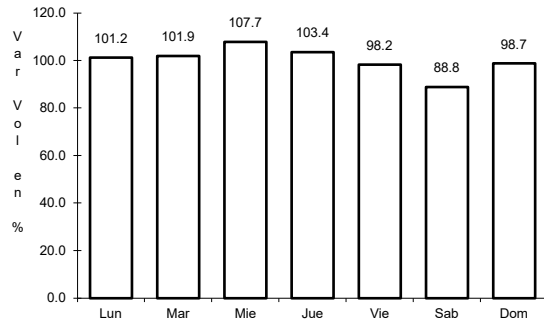
Tipo: 1

Sent: 0

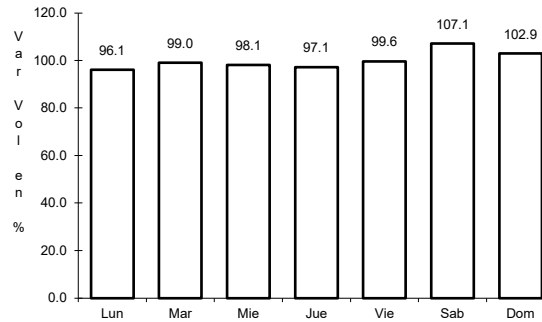
25 CARR: Ramal a San Pedro Ecatepec

CLAVE: 29561

ruta: TLAX



Km: 0.00      Tipo: 3      Sent: 0

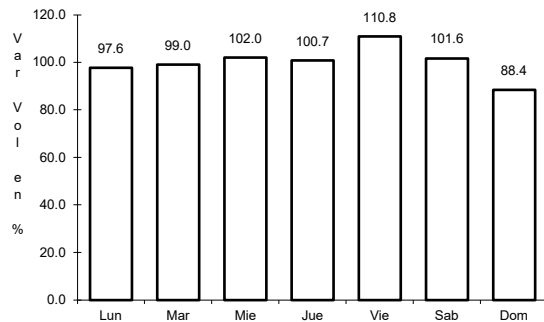


Km: 4.60      Tipo: 1      Sent: 0

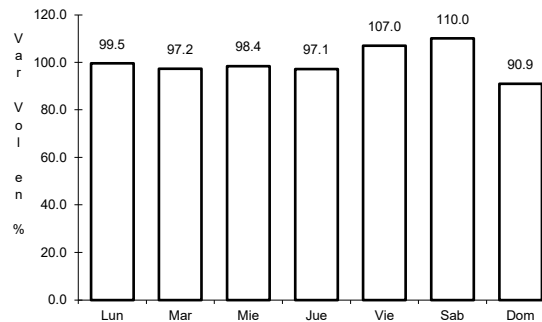
26 CARR: Ramal a Xalostoc

CLAVE: 29563

ruta: TLAX



Km: 0.00      Tipo: 3      Sent: 0

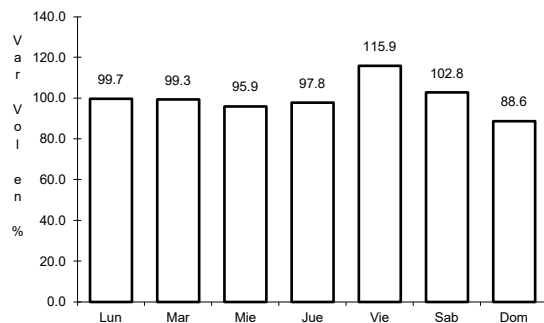


Km: 2.50      Tipo: 1      Sent: 0

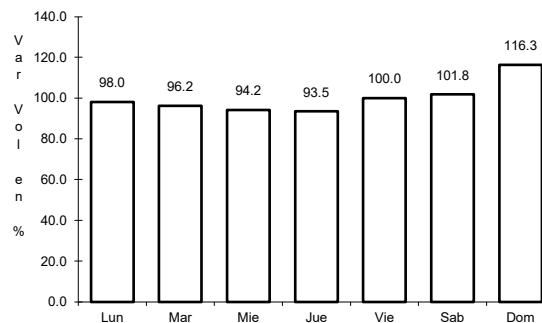
27 CARR: Xalostoc - Terrenate

CLAVE: 29390

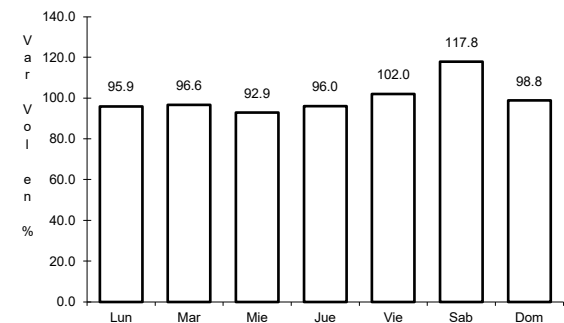
ruta: TLAX



Km: 0.00      Tipo: 3      Sent: 0



Km: 7.10      Tipo: 3      Sent: 0

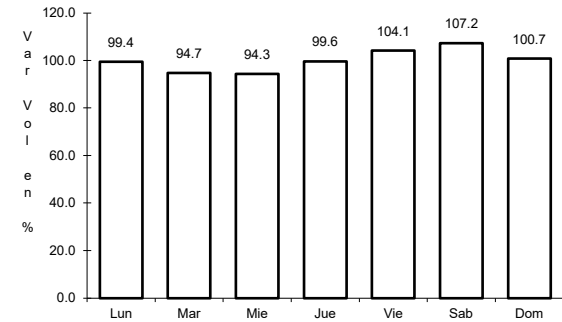
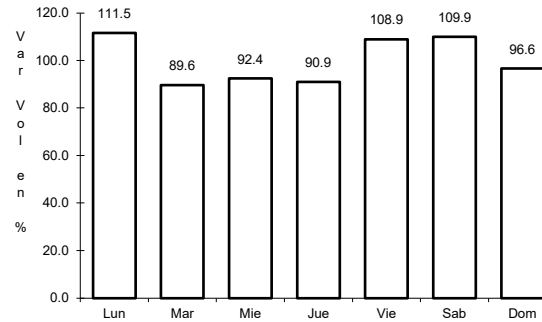
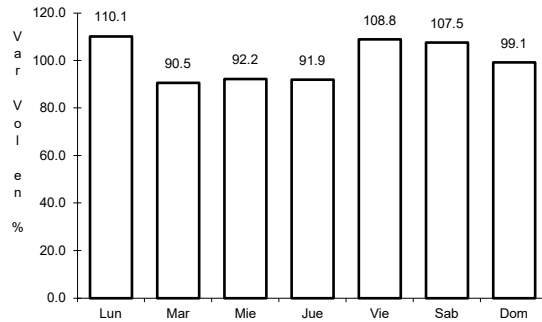


Km: 17.50      Tipo: 1      Sent: 0

28 CARR: Puebla - Tlaxcala (Cuota)

CLAVE:

RUTA: PUE-D



Km: 0.00                      Tipo: 3                      Sent: 0

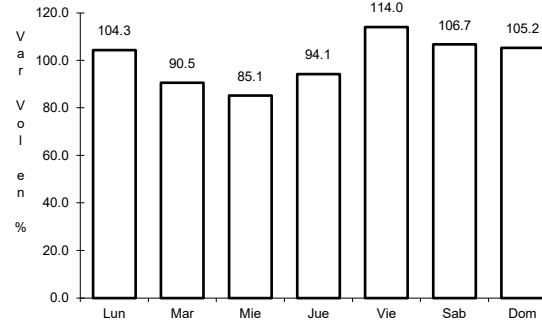
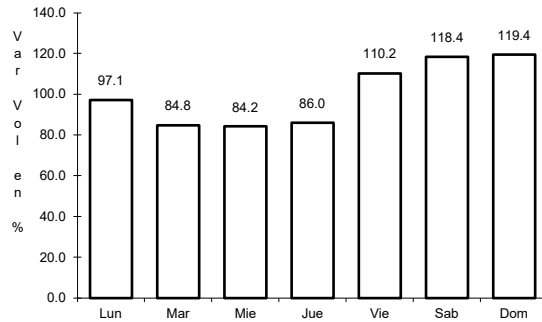
Km: 8.00                      Tipo: 3                      Sent: 0

Km: 17.80                      Tipo: 1                      Sent: 0

29 CARR: Tlaxco - Tejocotal (Cuota)

CLAVE: 00209

RUTA: PUE-TLAX-HGO-D



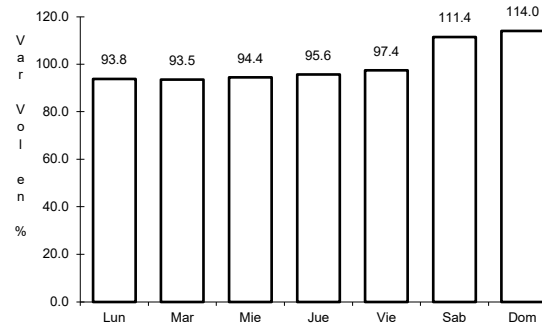
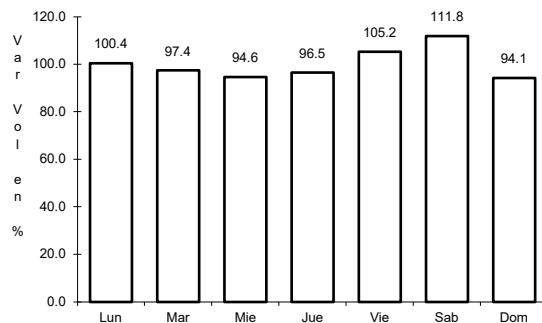
Km: 23.00                      Tipo: 3                      Sent: 0

Km: 56.20                      Tipo: 3                      Sent: 0

30 CARR: Acocotla - Vicente Guerrero

CLAVE: 29560

RUTA: MEX-TLAX



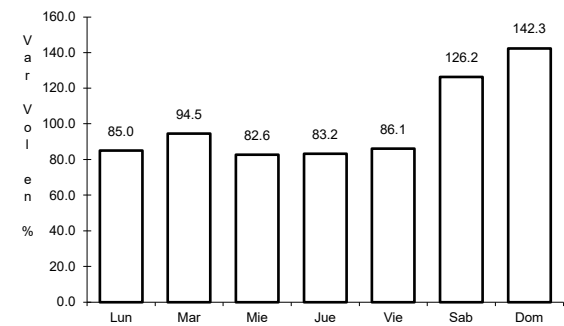
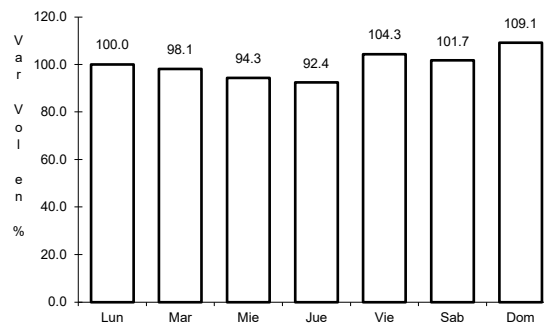
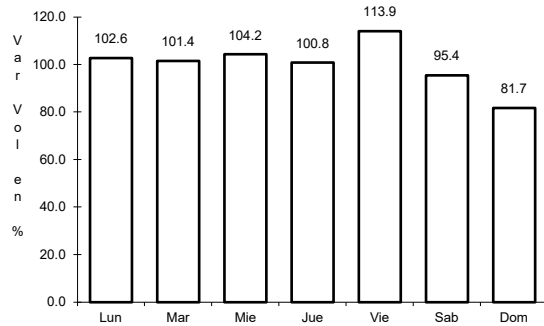
Km: 0.00                      Tipo: 3                      Sent: 0

Km: 35.60                      Tipo: 1                      Sent: 0

31 CARR: Apizaco - Emiliano Zapata

CLAVE: 29033

ruta: TLAX-MEX-136



Km: 0.00      Tipo: 3      Sent: 0

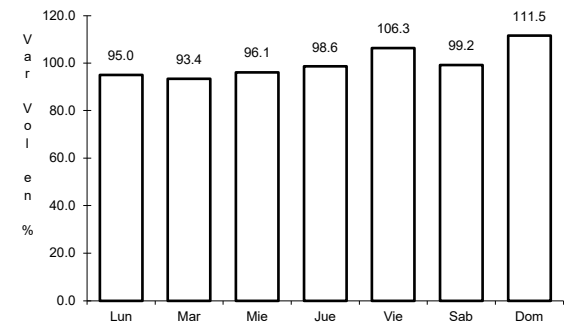
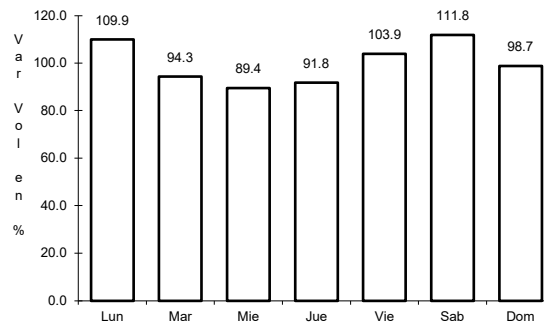
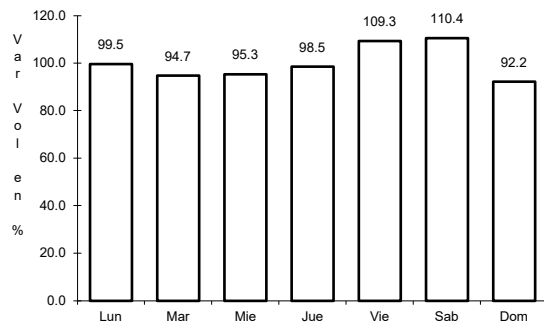
Km: 16.00      Tipo: 1      Sent: 0

Km: 37.00      Tipo: 1      Sent: 0

32 CARR: Calpulalpan - El Ocote

CLAVE: 00054

ruta: MEX-HGO



Km: 0.00      Tipo: 3      Sent: 0

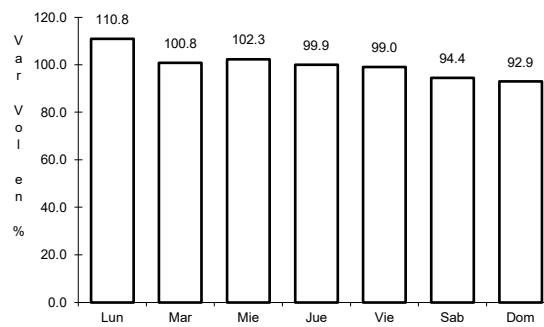
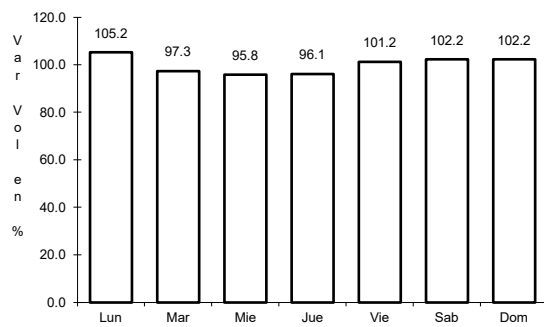
Km: 34.92      Tipo: 3      Sent: 0

Km: 70.44      Tipo: 1      Sent: 1

33 CARR: Calpulalpan - Nanacamilpa

CLAVE: 29034

ruta: TLAX-MEX-136



Km: 0.00      Tipo: 3      Sent: 0

Km: 15.50      Tipo: 1      Sent: 0

